



## Stony Plain Alberta

\$424,900

This home is the definition of turn-key and move in ready. Located in the quiet neighbourhood of St. Andrews, this 3 bedroom bi-level features tons of upgrades including new flooring upstairs, central A/C, vinyl siding, an updated kitchen and more! Upstairs features 2 bedrooms, with beautiful, built-in and hand crafted side tables. Head downstairs which features a rec area, laundry, and another bedroom and full bathroom. Avoid the cold this winter with the double detached HEATED garage with epoxy floors. This home has been meticulously cared for by the original owners (id:6769)

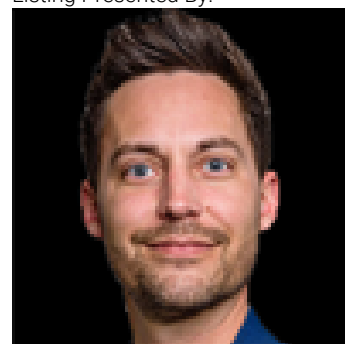
Bedroom 3 Measurements not available

Living room Measurements not available

Primary Bedroom Measurements not available

Bedroom 2 Measurements not available

Listing Presented By:



Originally Listed by:  
Exp Realty

<https://briannedoyle.exprealty.com/>

**RE/MAX ELITE**

**RE/MAX Elite Sherwood Park**

#116, 150 Chippewa Rd ,  
Edmonton, Alberta,

Phone: 780-984-9399

Fax:

steveleddy@hotmail.com

The property information on this website is derived from the Canadian Real Estate Association's Data Distribution Facility (DDF®). DDF® references real estate listings held by various brokerage firms and franchisees. The accuracy of information is not guaranteed and should be independently verified. The trademarks REALTOR®, REALTORS® and the REALTOR® logo are controlled by The Canadian Real Estate Association (CREA) and identify real estate professionals who are members of CREA. The trademarks MLS®, Multiple Listing Service® and the associated logos are owned by CREA and identify the quality of services provided by real estate professionals who are members of CREA.