



Edmonton Alberta

\$629,900

Fantastic Griesbach location on a CORNER LOT with OVERSIZED DOUBLE GARAGE & FULLY FINISHED BASEMENT. Offering 2,000+ sq. ft. plus a basement with SEPARATE ENTRANCE & SECOND KITCHEN, this home is perfect for families or investors. The open-concept main floor features a corner gas fireplace, stainless steel appliances, corner pantry, raised island eating bar, front den, 2-pc bath & walk-in storage. Upstairs you'll find a spacious primary retreat with walk-in closet & 5-pc ensuite (separate tub/shower), two additional bedrooms (one with walk-in closet), full bath & convenient BRAND NEW laundry. The basement includes a FULL KITCHEN, living room, bedroom, FULL bath & SECOND LAUNDRY. Enjoy the landscaped yard with deck, pergola, OVERSIZED 23'x24' garage & extra/RV parking. Recent UPGRADES: NEW UPPER-LEVEL WASHER & DRYER, NEW MAIN FLOOR STOVE, FRESHLY PAINTED FENCE. One of a kind, move in ready! This community is close to transit, shopping, restaurants, walking trails, community garden and more. (id:6769)

Family room 3.9 m X 4.69 m

Bedroom 4 3.48 m X 3.63 m

Second Kitchen 3.38 m X 4 m

Living room 4.9 m X 4.1 m

Dining room 3.05 m X 3.4 m

Kitchen 3.77 m X 3.1 m

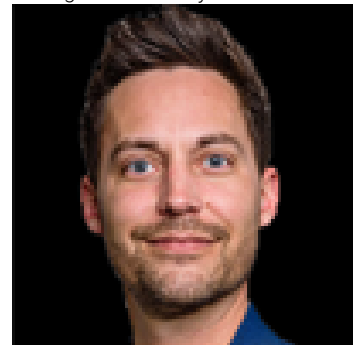
Den 3.61 m X 3.02 m

Primary Bedroom 4.22 m X 3.64 m

Bedroom 2 3.86 m X 2.93 m

Bedroom 3 2.87 m X 3.91 m

Listing Presented By:



Originally Listed by:
One Percent Realty

<https://www.opendreamdoors.com/>

RE/MAX ELITE

RE/MAX Elite Sherwood Park

#116, 150 Chippewa Rd,
Edmonton, Alberta,

Phone: 780-984-9399

Fax:

steveleddy@hotmail.com

The property information on this website is derived from the Canadian Real Estate Association's Data Distribution Facility (DDF®). DDF® references real estate listings held by various brokerage firms and franchisees. The accuracy of information is not guaranteed and should be independently verified. The trademarks REALTOR®, REALTORS® and the REALTOR® logo are controlled by The Canadian Real Estate Association (CREA) and identify real estate professionals who are members of CREA. The trademarks MLS®, Multiple Listing Service® and the associated logos are owned by CREA and identify the quality of services provided by real estate professionals who are members of CREA.