



## Edmonton Alberta

\$609,900

Gorgeous AVI-built 5 bedroom, 4 bathroom, 1,731 sq. ft. stone Tudor-style home in the highly sought-after community of Griesbach. This beautifully maintained home features a chef-inspired kitchen with upgraded stainless steel appliances, huge centre island, and separate walk-in pantry. Gorgeous refinished maple hardwood and a stunning double-sided brick fireplace anchor the main floor. Upstairs offers new vinyl plank flooring, a spacious primary suite with walk-in closet and ensuite, plus 2 additional bedrooms and full bath. Professionally developed basement includes a large family room, 2 bedrooms, and a 4th bathroom. Additional features include central A/C, central vac, tankless hot water, new shingles, and new carpet throughout. Enjoy the private fully fenced yard with multi-level deck, concrete patio, low-maintenance artificial turf, and double detached garage. Close to parks, schools, trails, shopping, restaurants, transit, Henday and downtown. (id:6769)

Family room 6.4 m X 3.96 m

Bedroom 4 3.1 m X 2.5 m

Bedroom 5 3.96 m X 3.35 m

Living room 4.57 m X 3.96 m

Dining room 3.96 m X 3.65 m

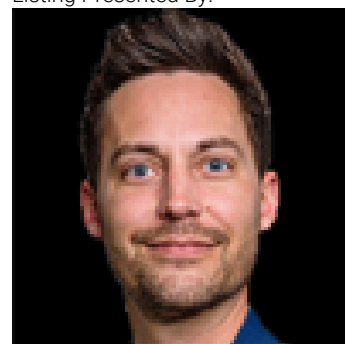
Kitchen 3.65 m X 3.65 m

Primary Bedroom 3.65 m X 3.35 m

Bedroom 2 3.6 m X 2.9 m

Bedroom 3 3.3 m X 3.1 m

Listing Presented By:



Originally Listed by:  
RE/MAX Excellence

<http://www.gregsteele.ca/>

**RE/MAX ELITE**

**RE/MAX Elite Sherwood Park**

#116, 150 Chippewa Rd,  
Edmonton, Alberta,

Phone: 780-984-9399

Fax:

steveleddy@hotmail.com

The property information on this website is derived from the Canadian Real Estate Association's Data Distribution Facility (DDF®). DDF® references real estate listings held by various brokerage firms and franchisees. The accuracy of information is not guaranteed and should be independently verified. The trademarks REALTOR®, REALTORS® and the REALTOR® logo are controlled by The Canadian Real Estate Association (CREA) and identify real estate professionals who are members of CREA. The trademarks MLS®, Multiple Listing Service® and the associated logos are owned by CREA and identify the quality of services provided by real estate professionals who are members of CREA.