



Leduc Alberta

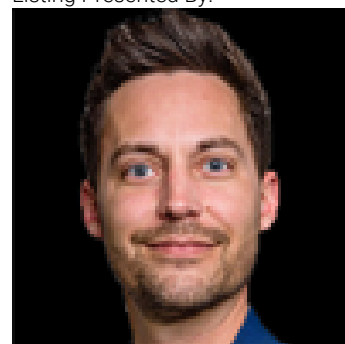
\$679,900

DOUBLE CAR GARAGE Upgraded BRAND New Detached Home || 2 Living Areas || 2 Open to Above || Separate Living & Family Area both with Open to Above || Main door entrance leads you to Open to above Living area. Moving on Family area with beautiful feature wall & fireplace . Main floor bedroom and full bathroom. BEAUTIFUL EXTENDED kitchen with Centre island. HUGE Spice Kitchen with lot of cabinets. Dining nook with access to backyard. Oak staircase leading to bonus room with feature wall. Huge Primary bedroom with stunning feature wall, indent ceiling, 5pc fully custom ensuite & W/I closet . Bedroom 2 & Bedroom 3 with common bathroom. Laundry on 2nd floor with sink. Side entrance for basement. (id:6769)

Living room Measurements not available
 Dining room Measurements not available
 Kitchen Measurements not available
 Family room Measurements not available
 Bedroom 4 Measurements not available
 Mud room Measurements not available

Second Kitchen Measurements not available
 Primary Bedroom Measurements not available
 Bedroom 2 Measurements not available
 Bedroom 3 Measurements not available
 Bonus Room Measurements not available

Listing Presented By:



Originally Listed by:
 Exp Realty



RE/MAX Elite Sherwood Park

#116, 150 Chippewa Rd ,
 Edmonton, Alberta,

Phone: 780-984-9399
 Fax:
 steveleddy@hotmail.com