



# Leduc Alberta

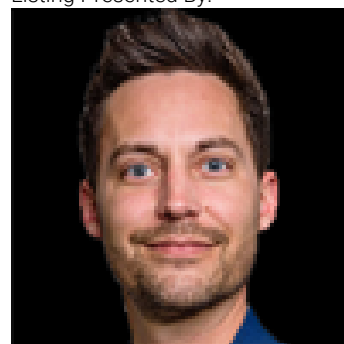
\$669,900

DOUBLE CAR GARAGE Upgraded BRAND New Detached Home || 2 Living Areas || 2 Open to Above || Separate Living & Family Area both with Open to Above || Main door entrance leads you to Open to above Living area. Moving on Family area with beautiful feature wall & fireplace . Main floor bedroom and full bathroom. BEAUTIFUL EXTENDED kitchen with Centre island. HUGE Spice Kitchen with lot of cabinets. Dining nook with access to backyard. Oak staircase leading to bonus room with feature wall. Huge Primary bedroom with stunning feature wall, indent ceiling, 5pc fully custom ensuite & W/I closet . Bedroom 2 & Bedroom 3 with common bathroom. Laundry on 2nd floor with sink. Side entrance for basement. (id:6769)

Living room Measurements not available  
 Dining room Measurements not available  
 Kitchen Measurements not available  
 Family room Measurements not available  
 Bedroom 4 Measurements not available  
 Mud room Measurements not available

Second Kitchen Measurements not available  
 Primary Bedroom Measurements not available  
 Bedroom 2 Measurements not available  
 Bedroom 3 Measurements not available  
 Bonus Room Measurements not available

Listing Presented By:



Originally Listed by:  
 Exp Realty



**RE/MAX Elite Sherwood Park**

#116, 150 Chippewa Rd ,  
 Edmonton, Alberta,

Phone: 780-984-9399  
 Fax:  
 steveleddy@hotmail.com

The property information on this website is derived from the Canadian Real Estate Association's Data Distribution Facility (DDF®). DDF® references real estate listings held by various brokerage firms and franchisees. The accuracy of information is not guaranteed and should be independently verified. The trademarks REALTOR®, REALTORS® and the REALTOR® logo are controlled by The Canadian Real Estate Association (CREA) and identify real estate professionals who are members of CREA. The trademarks MLS®, Multiple Listing Service® and the associated logos are owned by CREA and identify the quality of services provided by real estate professionals who are members of CREA.