



Edmonton Alberta

\$675,000

Foreclosure property in Laurel situated on a large pie-shaped lot and featuring a triple car garage. The main floor includes a bedroom, full bathroom, and open living space. The upper level offers three bedrooms, bonus room and two open-to-below areas. The basement is unfinished and includes a side entrance. Located close to schools, shopping, parks, and major roadways. Property is sold "as is, where is" on possession day. (id:6769)

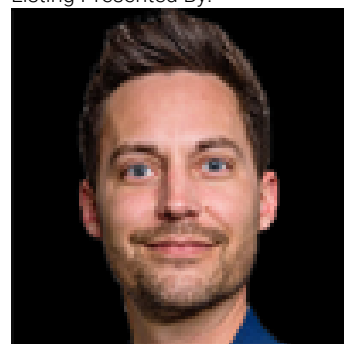
Bedroom 4 Measurements not available

Bedroom 2 Measurements not available

Primary Bedroom Measurements not available

Bedroom 3 Measurements not available

Listing Presented By:



Originally Listed by:
Real Broker

RE/MAX ELITE

RE/MAX Elite Sherwood Park

#116, 150 Chippewa Rd ,
Edmonton, Alberta,

Phone: 780-984-9399

Fax:

steveleddy@hotmail.com

The property information on this website is derived from the Canadian Real Estate Association's Data Distribution Facility (DDF®). DDF® references real estate listings held by various brokerage firms and franchisees. The accuracy of information is not guaranteed and should be independently verified. The trademarks REALTOR®, REALTORS® and the REALTOR® logo are controlled by The Canadian Real Estate Association (CREA) and identify real estate professionals who are members of CREA. The trademarks MLS®, Multiple Listing Service® and the associated logos are owned by CREA and identify the quality of services provided by real estate professionals who are members of CREA.