



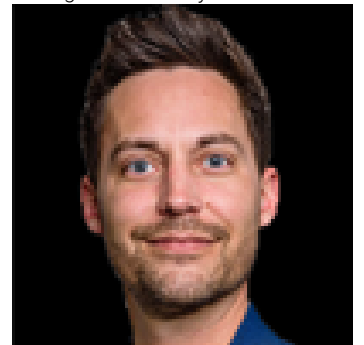
## Edmonton Alberta

\$374,900

This beautifully maintained half duplex with NO CONDO FEES in Rutherford is the perfect place to call home! Located minutes from schools, transit, and amenities, it offers both comfort and convenience. The main floor features a half bath, open concept kitchen and living space with a cozy natural gas fireplace. Upstairs includes 3 spacious bedrooms, including a primary with double closets, plus a 4 piece bath and ample storage. The unfinished basement offers great potential and includes a secondary sump pump for added peace of mind. Enjoy the large backyard with mature lilac trees and a spacious deck, perfect for relaxing or entertaining. Complete with a single attached garage, plenty of street parking, close proximity to walking trails, parks, and schools AND a newer roof (2022), this home is move in ready! (id:6769)

Primary Bedroom Measurements not available      Bedroom 3 Measurements not available  
Bedroom 2 Measurements not available

Listing Presented By:



Originally Listed by:  
Century 21 Masters

<https://alyssakasko.com/>

**RE/MAX ELITE**

**RE/MAX Elite Sherwood Park**

#116, 150 Chippewa Rd ,  
Edmonton, Alberta,

Phone: 780-984-9399

Fax:

steveleddy@hotmail.com

The property information on this website is derived from the Canadian Real Estate Association's Data Distribution Facility (DDF®). DDF® references real estate listings held by various brokerage firms and franchisees. The accuracy of information is not guaranteed and should be independently verified. The trademarks REALTOR®, REALTORS® and the REALTOR® logo are controlled by The Canadian Real Estate Association (CREA) and identify real estate professionals who are members of CREA. The trademarks MLS®, Multiple Listing Service® and the associated logos are owned by CREA and identify the quality of services provided by real estate professionals who are members of CREA.