



## Edmonton Alberta

\$352,000

Fixer-Upper Half Duplex in Inglewood - Perfect for Investors or First-Time Buyers Opportunity knocks in Inglewood! This half duplex features 3 spacious bedrooms and a large basement family room with a kitchenette--ideal for a home office, guest setup, or hobby space. Enjoy the private 2-tiered deck, central A/C, shared double garage stall, and plenty of extra storage. The home needs some updates, but the layout and features offer solid upside for the right buyer. A smart pick for investors, contractors, or first-time buyers looking to build equity. Prime location close to schools, transit, amenities, and just minutes from Downtown Edmonton. (id:6769)

Family room 6.9 m X 4.8 m

Bedroom 3 3.41 m X 3.6 m

Utility room 2.36 m X 3 m

Second Kitchen 3.33 m X 3 m

Living room 4.36 m X 4.99 m

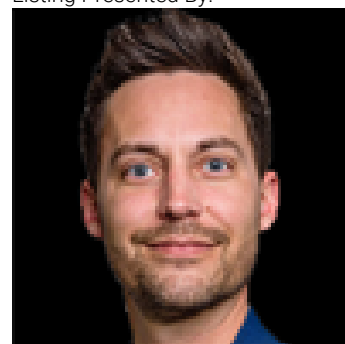
Dining room 3.58 m X 2.34 m

Kitchen 3.52 m X 2.6 m

Primary Bedroom 4.13 m X 3.6 m

Bedroom 2 2.8 m X 3.1 m

Listing Presented By:



Originally Listed by:  
Sterling Real Estate

<http://www.bestedmontonrealestate.com/>

**RE/MAX ELITE**

**RE/MAX Elite Sherwood Park**

#116, 150 Chippewa Rd ,  
Edmonton, Alberta,

Phone: 780-984-9399

Fax:

steveleddy@hotmail.com