



## Edmonton Alberta

\$325,000

NO CONDO FEE. This half-duplex is sitting in the developed neighbourhood of Delton. Features hardwood floors, quartz countertop & stainless steel appliance. A separate entrance is leading to fully finished basement with second kitchen in-law suite. Just ten minute drive from downtown, NAIT, and easy access to Yellowhead Trail, it's a great location for a young family or college students and first time home owner. (id:6769)

Bedroom 4 Measurements not available

Second Kitchen Measurements not available

Living room Measurements not available

Dining room Measurements not available

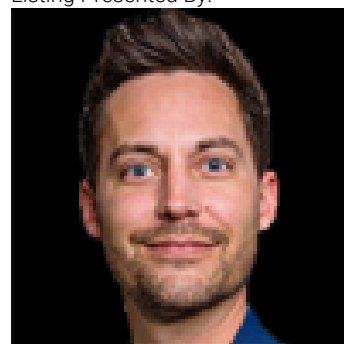
Kitchen Measurements not available

Primary Bedroom Measurements not available

Bedroom 2 Measurements not available

Bedroom 3 Measurements not available

Listing Presented By:



Originally Listed by:  
Exp Realty

**RE/MAX ELITE**

**RE/MAX Elite Sherwood Park**

#116, 150 Chippewa Rd ,  
Edmonton, Alberta,

Phone: 780-984-9399

Fax:

steveleddy@hotmail.com

The property information on this website is derived from the Canadian Real Estate Association's Data Distribution Facility (DDF®). DDF® references real estate listings held by various brokerage firms and franchisees. The accuracy of information is not guaranteed and should be independently verified. The trademarks REALTOR®, REALTORS® and the REALTOR® logo are controlled by The Canadian Real Estate Association (CREA) and identify real estate professionals who are members of CREA. The trademarks MLS®, Multiple Listing Service® and the associated logos are owned by CREA and identify the quality of services provided by real estate professionals who are members of CREA.