



Edmonton Alberta

\$425,000

Nestled in the sought-after community of Blue Quill Estates, this spacious half duplex offers an exceptional blend of location, comfort, and functionality. Tucked into a quiet cul-de-sac, it provides added privacy while being steps from parks, playgrounds, walking trails, and reputable schools, with easy access to shopping and major roadways. Inside, vaulted ceilings and large windows create a bright, open feel, complemented by a cozy fireplace and an elegant open stairwell with wood railings. The upper level features a generous primary bedroom with full ensuite, plus additional well-sized bedrooms. The fully developed basement offers flexible space for a family room, games area, or gym. Enjoy the sunny south-facing deck with access from two patio doors. Complete with an oversized double attached garage and updates including newer roof, furnace, and AC. (id:6769)

Living room 6.56 m X 5.1 m

Dining room 3.01 m X 3.7 m

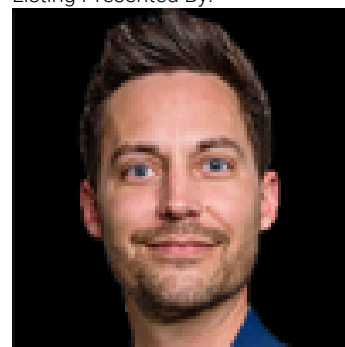
Kitchen 3.67 m X 2.7 m

Primary Bedroom 3.95 m X 6.4 m

Bedroom 2 3.08 m X 3.7 m

Bedroom 3 3.67 m X 4.3 m

Listing Presented By:



Originally Listed by:
MaxWell Polaris

<https://www.polarissells.com/agent/isaiah-lezama/>

RE/MAX ELITE

RE/MAX Elite Sherwood Park

#116, 150 Chippewa Rd ,
Edmonton, Alberta,

Phone: 780-984-9399

Fax:

steveleddy@hotmail.com

The property information on this website is derived from the Canadian Real Estate Association's Data Distribution Facility (DDF®). DDF® references real estate listings held by various brokerage firms and franchisees. The accuracy of information is not guaranteed and should be independently verified. The trademarks REALTOR®, REALTORS® and the REALTOR® logo are controlled by The Canadian Real Estate Association (CREA) and identify real estate professionals who are members of CREA. The trademarks MLS®, Multiple Listing Service® and the associated logos are owned by CREA and identify the quality of services provided by real estate professionals who are members of CREA.