



Edmonton Alberta

\$450,000

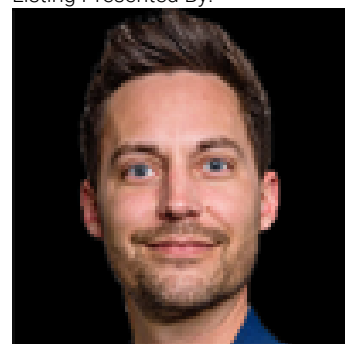
Welcome to this beautifully maintained home in the sought-after southwest community of Paisley. Built in 2021, this modern home offers stylish finishes and functional living spaces throughout. The open-concept main floor features luxury vinyl plank flooring, ceramic tile, and a bright kitchen complete with quartz countertops, ceiling-height cabinetry, and ample prep space for cooking and entertaining. Large windows throughout the home fill the space with natural light. Step outside to enjoy the concrete patio overlooking green space, perfect for summer BBQs and relaxing evenings. The fully fenced and landscaped yard provides both privacy and outdoor enjoyment. The partially finished basement offers additional living space, including a large family room and an extra bedroom. Enjoy the perfect balance of nature and convenience with nearby walking trails, parks, playgrounds, the Paisley Off-Leash Dog Park, shopping, schools, and quick access to major commuter routes. (id:6769)

Primary Bedroom 12'1" x 13'4"

Bedroom 3 13'3" x 8'11"

Bedroom 2 10'3" x 9'10"

Listing Presented By:



Originally Listed by:
Exp Realty



RE/MAX Elite Sherwood Park

#116, 150 Chippewa Rd ,
Edmonton, Alberta,

Phone: 780-984-9399

Fax:

steveleddy@hotmail.com

The property information on this website is derived from the Canadian Real Estate Association's Data Distribution Facility (DDF®). DDF® references real estate listings held by various brokerage firms and franchisees. The accuracy of information is not guaranteed and should be independently verified. The trademarks REALTOR®, REALTORS® and the REALTOR® logo are controlled by The Canadian Real Estate Association (CREA) and identify real estate professionals who are members of CREA. The trademarks MLS®, Multiple Listing Service® and the associated logos are owned by CREA and identify the quality of services provided by real estate professionals who are members of CREA.