

Edmonton Alberta

\$501,258

Enjoy our Asher; A Single Family Rear Detached Home Located on Cristall Way, Chappelle's Newest and Most Accessible Area. The lot features a East Facing Backyard, Great for Natural Light in the Morning. This home includes Front Landscaping and an Enclosed Side Entrance, Great for Future Legal Suite Development. The mainfloor has a Designer Kitchen Package Including Installed Chimney Hood Fan, French Door Fridge w/ Exterior Ice and Water, Dishwasher, Gas Range, Built-In Microwave. Cozy up in the secondary living room in front of a Modern Electric Fireplace. There is Spindle Railing to Replace Stubwall On First Floor. 3CM Quartz Countertops with Undermount Sinks Throughout. The upper floor features a Spacious 3 Bedroom floor plan. (id:6769)

Living room Measurements not available

Dining room Measurements not available

Kitchen Measurements not available

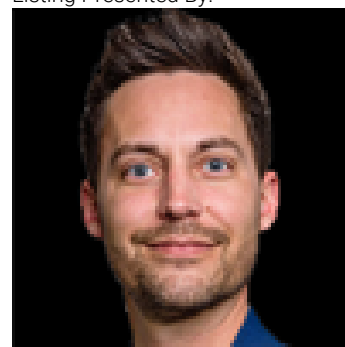
Primary Bedroom Measurements not available

Bedroom 2 Measurements not available

Bedroom 3 Measurements not available

Laundry room Measurements not available

Listing Presented By:



Originally Listed by:
Century 21 Leading

<https://www.chrisreidedmonton.com/>

RE/MAX ELITE

RE/MAX Elite Sherwood Park

#116, 150 Chippewa Rd ,
Edmonton, Alberta,

Phone: 780-984-9399

Fax:

steveleddy@hotmail.com

The property information on this website is derived from the Canadian Real Estate Association's Data Distribution Facility (DDF®). DDF® references real estate listings held by various brokerage firms and franchisees. The accuracy of information is not guaranteed and should be independently verified. The trademarks REALTOR®, REALTORS® and the REALTOR® logo are controlled by The Canadian Real Estate Association (CREA) and identify real estate professionals who are members of CREA. The trademarks MLS®, Multiple Listing Service® and the associated logos are owned by CREA and identify the quality of services provided by real estate professionals who are members of CREA.