



Edmonton Alberta

\$484,900

AFFORDABLE family living meets exceptional value in sought-after Blue Quill Estates--and no condo fees! This spacious home offers impressive square footage at an unbeatable price, perfect for growing families. Enjoy a bright and functional layout featuring large bedrooms, both a main floor living room and cozy family room, plus two fireplaces for added warmth and charm. Step outside to a beautifully fenced west-facing backyard with a generous deck--ideal for entertaining or relaxing in the evening sun. The primary suite boasts a private balcony with a lovely view, creating the perfect personal retreat. With parks, ravines, and excellent schools just steps away, this home truly delivers comfort, convenience, and incredible value. (id:6769)

Living room 4.76 m X 3.94 m

Dining room 3.99 m X 2.02 m

Kitchen 3.43 m X 2.92 m

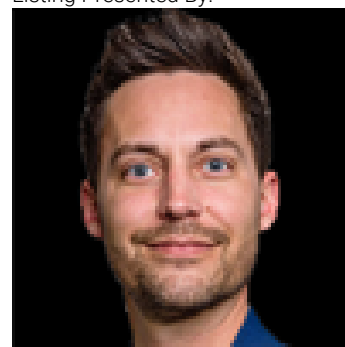
Family room 7.62 m X 5.09 m

Primary Bedroom 5.23 m X 5.06 m

Bedroom 2 4.16 m X 3.36 m

Bedroom 3 3.37 m X 3.36 m

Listing Presented By:



Originally Listed by:
Real Broker

<https://proctorteam.com/>

RE/MAX ELITE

RE/MAX Elite Sherwood Park

#116, 150 Chippewa Rd ,
Edmonton, Alberta,

Phone: 780-984-9399

Fax:

steveleddy@hotmail.com

The property information on this website is derived from the Canadian Real Estate Association's Data Distribution Facility (DDF®). DDF® references real estate listings held by various brokerage firms and franchisees. The accuracy of information is not guaranteed and should be independently verified. The trademarks REALTOR®, REALTORS® and the REALTOR® logo are controlled by The Canadian Real Estate Association (CREA) and identify real estate professionals who are members of CREA. The trademarks MLS®, Multiple Listing Service® and the associated logos are owned by CREA and identify the quality of services provided by real estate professionals who are members of CREA.