

NO PHOTO AVAILABLE

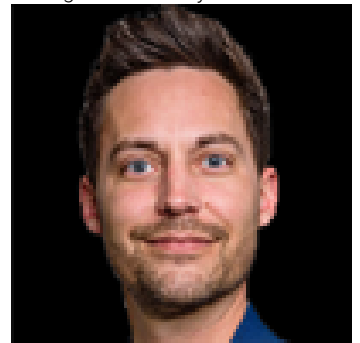
**For more photos &
information, please
contact me.**

Edmonton Alberta

\$22

o Exposure retail location on Edmonton's trendy 124 Streeto Operated as a bakery location, the mix of retail and preparation area works for a variety of userso On site parking available for customers or staffo Diverse mix of existing tenants including a pharmacy/medical centre, Papa Johns Pizza, convenience, liquor, and therapeutic massage (id:6769)

Listing Presented By:



Originally Listed by:
NAI Commercial Real Estate Inc

RE/MAX ELITE

RE/MAX Elite Sherwood Park

#116, 150 Chippewa Rd ,
Edmonton, Alberta,

Phone: 780-984-9399

Fax:

steveleddy@hotmail.com

The property information on this website is derived from the Canadian Real Estate Association's Data Distribution Facility (DDF®). DDF® references real estate listings held by various brokerage firms and franchisees. The accuracy of information is not guaranteed and should be independently verified. The trademarks REALTOR®, REALTORS® and the REALTOR® logo are controlled by The Canadian Real Estate Association (CREA) and identify real estate professionals who are members of CREA. The trademarks MLS®, Multiple Listing Service® and the associated logos are owned by CREA and identify the quality of services provided by real estate professionals who are members of CREA.