



## Edmonton Alberta

\$360,000

Welcome to StreetSide 3-storey home design featuring two spacious primary bedrooms, each with its own 4-piece ensuite and walk-in closets. The Main level has a open-concept layout with a modern kitchen featuring quartz countertops, an island with flush eating bar, a powder room and a living room that opens onto a vinyl & aluminum deck—perfect for relaxing or entertaining. Stylish finishes include luxury vinyl plank flooring and carpet throughout. The Upper floor contains 2 bedrooms each with their own ensuite and walk-in closets, laundry completes this level. The oversized double garage provides extra space for storage or toys. Enjoy professional landscaping, visitor parking on site, and close to shopping and amenities Anthony Henday and Whitemud. (id:6769)

Living room 5.26 m X 3.52 m

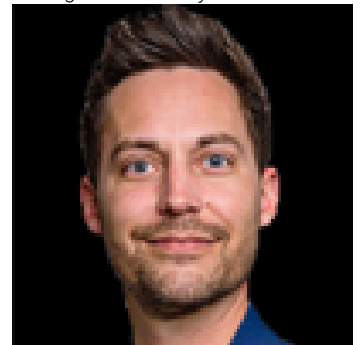
Dining room 3.99 m X 2.29 m

Kitchen 5.26 m X 2.88 m

Primary Bedroom 4.23 m X 5.55 m

Bedroom 2 3.82 m X 3.29 m

Listing Presented By:



Originally Listed by:  
smartPRO Realty

**RE/MAX ELITE**

**RE/MAX Elite Sherwood Park**

#116, 150 Chippewa Rd ,  
Edmonton, Alberta,

Phone: 780-984-9399

Fax:

steveleddy@hotmail.com

The property information on this website is derived from the Canadian Real Estate Association's Data Distribution Facility (DDF®). DDF® references real estate listings held by various brokerage firms and franchisees. The accuracy of information is not guaranteed and should be independently verified. The trademarks REALTOR®, REALTORS® and the REALTOR® logo are controlled by The Canadian Real Estate Association (CREA) and identify real estate professionals who are members of CREA. The trademarks MLS®, Multiple Listing Service® and the associated logos are owned by CREA and identify the quality of services provided by real estate professionals who are members of CREA.