



Edmonton Alberta

\$689,900

Move In Ready, Backing Walking Trail! Award Winning Builder, Montorio Homes offers the Salerno Model. This Classic Beauty Mixed with many Upgraded Modern Details Featuring 18' Feet Open to Below in the Great Room, c/w Electric Fireplace. The Floorplan is Ideal for Families Looking for Functional Living Spaces with 4 Bedrooms (1 on main floor with Full Bathroom), Spacious Mudroom, Walk-through Pantry and Upstairs Laundry for Extra Convenience. Designer Kitchen has Plenty of Counterspace for Entertaining and Meal Preparation, Plenty or Large Windows for Natural Light Throughout. Additional Upgrades Include 9' Ceilings, Luxury Vinyl Plank, Upgraded Cabinets, Quartz Countertops, Stylish Tiled Backsplash, Upgraded Plumbing Throughout with Undermount Sinks, Railing, A Smart Home Package, Separate Entrance to the Basement for Future Rental Income all situated on the shores of Big Lake with 67 acres of Environmental Reserve, Various Ponds and Wetlands within the Community and easy access to Anthony Henday. (id:6769)

Living room Measurements not available

Dining room Measurements not available

Kitchen Measurements not available

Bedroom 4 Measurements not available

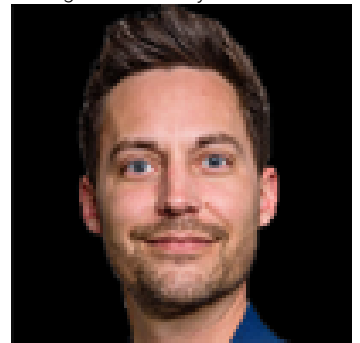
Primary Bedroom Measurements not available

Bedroom 2 Measurements not available

Bedroom 3 Measurements not available

Bonus Room Measurements not available

Listing Presented By:



Originally Listed by:
Century 21 Leading



RE/MAX Elite Sherwood Park

#116, 150 Chippewa Rd ,
Edmonton, Alberta,

Phone: 780-984-9399

Fax:

steveleddy@hotmail.com