



## Edmonton Alberta

\$130,987

Beautiful 13 floor condo with amazing views of downtown and the river valley. Just minutes from downtown and all the amenities. A short walk to the river valley and LRT to the west end and downtown coming shortly. This fully renovated unit has a large living area, dining room and upgraded kitchen. The bedroom is very spacious and has a wall of closets. The luxurious bathroom has beautiful tile and a bubble tub to relax and soak away your stress. New vinyl plank flooring throughout, upgraded lighting and doors complete this unit but it is definitely the views that will keep you in AH sit out side with a glass of your favorite and enjoy some of the best views the city has to offer. (id:6769)

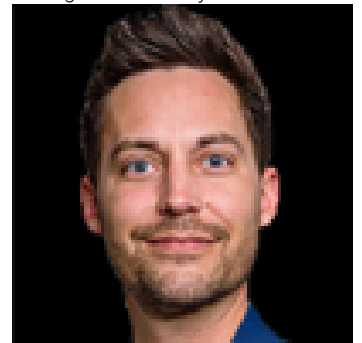
Living room Measurements not available

Dining room Measurements not available

Kitchen Measurements not available

Primary Bedroom Measurements not available

Listing Presented By:



Originally Listed by:  
RE/MAX Professionals

<https://bryanthomas.remax.ca/>



**RE/MAX Elite Sherwood Park**

#116, 150 Chippewa Rd ,  
Edmonton, Alberta,

Phone: 780-984-9399

Fax:

steveleddy@hotmail.com

The property information on this website is derived from the Canadian Real Estate Association's Data Distribution Facility (DDF®). DDF® references real estate listings held by various brokerage firms and franchisees. The accuracy of information is not guaranteed and should be independently verified. The trademarks REALTOR®, REALTORS® and the REALTOR® logo are controlled by The Canadian Real Estate Association (CREA) and identify real estate professionals who are members of CREA. The trademarks MLS®, Multiple Listing Service® and the associated logos are owned by CREA and identify the quality of services provided by real estate professionals who are members of CREA.