



Edmonton Alberta

\$425,000

Welcome to this beautifully renovated 1018 sq ft bungalow offering modern style, flexibility, and a prime location. Featuring 4 bedrooms and 2 full baths, this home boasts bright finishes, large windows for natural light, and a clean, contemporary design throughout. The basement includes a second kitchen with stainless steel appliances, under-cabinet lighting, a bedroom, and a full bath, making it ideal for extended family or guests. Recent upgrades include new windows in 2021 along with a roof and hot water tank that are only 5 years old. Step outside to a landscaped backyard with a large deck, pergola, and patio that create an inviting space for summer entertaining or quiet evenings at home. The oversized double garage is fully insulated and heated, with additional RV parking for convenience. Ideally located, this home is close to Lansdowne Playground, Londonderry Mall, public transit, schools and Rundle Park Golf Course. Everything is move-in ready, come see how perfectly this home fits your lifestyle. (id:6769)

Bedroom 4 2.79 m X 3.19 m

Second Kitchen 4.43 m X 4.14 m

Recreation room 3.26 m X 7.25 m

Office 3.26 m X 2.85 m

Laundry room 3.06 m X 2.85 m

Living room 3.54 m X 6.12 m

Dining room Measurements not available

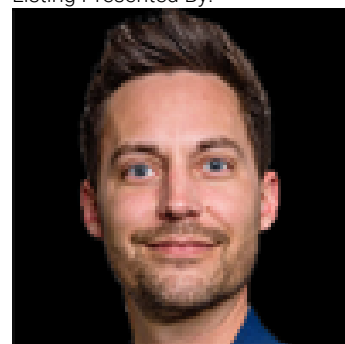
Kitchen 2.57 m X 4.27 m

Primary Bedroom 3.54 m X 3.66 m

Bedroom 2 3.59 m X 2.53 m

Bedroom 3 3.42 m X 3.58 m

Listing Presented By:



Originally Listed by:
Exp Realty

RE/MAX ELITE

RE/MAX Elite Sherwood Park

#116, 150 Chippewa Rd ,
Edmonton, Alberta,

Phone: 780-984-9399

Fax:

steveleddy@hotmail.com

The property information on this website is derived from the Canadian Real Estate Association's Data Distribution Facility (DDF®). DDF® references real estate listings held by various brokerage firms and franchisees. The accuracy of information is not guaranteed and should be independently verified. The trademarks REALTOR®, REALTORS® and the REALTOR® logo are controlled by The Canadian Real Estate Association (CREA) and identify real estate professionals who are members of CREA. The trademarks MLS®, Multiple Listing Service® and the associated logos are owned by CREA and identify the quality of services provided by real estate professionals who are members of CREA.