

Stony Plain Alberta

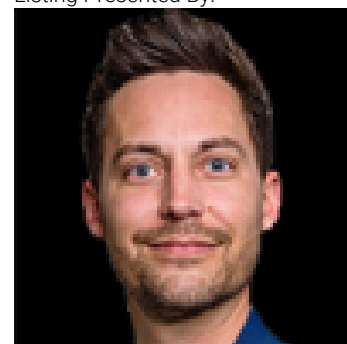
\$439,900

Welcome to the desired community of South Creek in Stony Plain. This beautiful home features 4 bdrms, 3.5 baths w/gorgeous open concept main flr w/plenty of natural light. The kitchen is upgraded with CAMBRIA countertops, tile backsplash, sleek stainless-steel appliances, a BUTLER'S KITCHEN in the WALK-THRU PANTRY & sizable ISLAND w/EATING BAR! A FAMILY-SIZED dining & living rm area is perfect for entertaining all your guests & a 2 pce powder rm finishes off the main floor. Upstairs you will FALL IN LOVE w/a FLEX SPACE, perfect for a SITTING AREA, OFFICE OR PLAYRM & a KING-SIZED MASTER BDRM, ensuite w/HIS & HERS SINKS, LARGE SHOWER & a walk in closet with 2 more good-sized bdrms, full bath & LAUNDRY AREA close by. The lower level is partially finished w/a bedrm & a FULL bath! You will enjoy sipping your morning coffee on the deck while you appreciate the private, FULLY FENCED & LANDSCAPED YARD. DBL GARAGE, A/C, FIREPLACE & many more great features makes this home a TRUE 10/10! STOP Waiting, START Living! (id:6769)

Bedroom 4 Measurements not available
 Living room Measurements not available
 Dining room Measurements not available
 Kitchen Measurements not available
 Family room Measurements not available

Primary Bedroom Measurements not available
 Bedroom 2 Measurements not available
 Bedroom 3 Measurements not available
 Bonus Room Measurements not available

Listing Presented By:



Originally Listed by:
 RE/MAX Excellence

<http://www.sidyar.com/>



RE/MAX Elite Sherwood Park

#116, 150 Chippewa Rd ,
 Edmonton, Alberta,

Phone: 780-984-9399

Fax:

steveleddy@hotmail.com

The property information on this website is derived from the Canadian Real Estate Association's Data Distribution Facility (DDF®). DDF® references real estate listings held by various brokerage firms and franchisees. The accuracy of information is not guaranteed and should be independently verified. The trademarks REALTOR®, REALTORS® and the REALTOR® logo are controlled by The Canadian Real Estate Association (CREA) and identify real estate professionals who are members of CREA. The trademarks MLS®, Multiple Listing Service® and the associated logos are owned by CREA and identify the quality of services provided by real estate professionals who are members of CREA.