



Edmonton Alberta

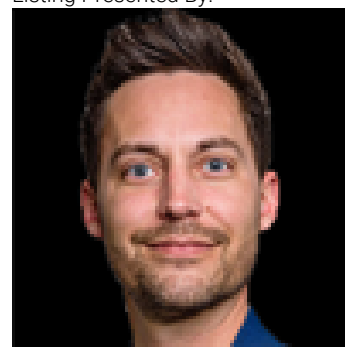
\$649,900

An elegantly renovated mid century 1 & 1/2 storey on a 1/4 acre pie lot with a 2 BEDROOM GARAGE SUITE in Dovercourt! Across from an island park & completely renovated with newer windows, siding, shingles, eavestroughs, fascia, doors, furnace, H2O tank, and park-like landscaping. Main house: Living room with decorative alcove & formal dining room, crown moulding & curved archway, peninsula kitchen with s/s appliances & refurbished cabinets, 4-piece bath, & bedroom (currently used as m/f laundry). Top floor: 2 bright, large bedrooms & storage. Basement: SEPARATE ENTRANCE, family room, bedrooms 4 & 5, bathroom, & storage room w/laundry hookups. Vinyl plank, fresh paint & upgraded lighting & designer ceiling fans throughout! Garage Suite: Spacious w/2 bedrooms, bath, living/dining & kitchen. Garage: 2 separate bays, heated, 220v, access to foyer of suite from 2nd bay. Landscaping: Better Homes & Gardens! Wrought iron fencing & gates, arbours, deck, patio, perennials, garden paths. RV Parking, new sewer line. (id:6769)

Second Kitchen 3.14 m X 2.85 m
 Bedroom 6 2.24 m X 3.19 m
 Additional bedroom 3.48 m X 3.19 m
 Family room 3.22 m X 4.55 m
 Bedroom 4 3.68 m X 3.38 m
 Bedroom 5 3.19 m X 3.38 m

Living room 3.41 m X 3.47 m
 Dining room 3.41 m X 5.36 m
 Kitchen 3.98 m X 2.55 m
 Bedroom 3 3.23 m X 2.39 m
 Primary Bedroom 5.14 m X 3.92 m
 Bedroom 2 6.08 m X 3.89 m

Listing Presented By:



Originally Listed by:
 Royal LePage Prestige Realty

<http://www.jodieallen.com/>



RE/MAX Elite Sherwood Park

#116, 150 Chippewa Rd ,
 Edmonton, Alberta,

Phone: 780-984-9399

Fax:

steveleddy@hotmail.com

The property information on this website is derived from the Canadian Real Estate Association's Data Distribution Facility (DDF®). DDF® references real estate listings held by various brokerage firms and franchisees. The accuracy of information is not guaranteed and should be independently verified. The trademarks REALTOR®, REALTORS® and the REALTOR® logo are controlled by The Canadian Real Estate Association (CREA) and identify real estate professionals who are members of CREA. The trademarks MLS®, Multiple Listing Service® and the associated logos are owned by CREA and identify the quality of services provided by real estate professionals who are members of CREA.