



Edmonton Alberta

\$789,900

Prime Laurier Heights location! This 75' x 140' lot backs directly onto trees, creating the perfect backdrop for a dream home. Ideal for renovation or redevelopment, with the possibility of a walkout basement. Enjoy access to the River Valley, the Zoo, and Buena Vista Dog Park. A stunning setting with endless potential! (id:6769)

Bedroom 4 5.72 m X 3.11 m

Recreation room 5.72 m X 3.66 m

Storage 6.9 m X 5.03 m

Living room 6.66 m X 4.06 m

Dining room 4.02 m X 3 m

Kitchen 3.76 m X 3.06 m

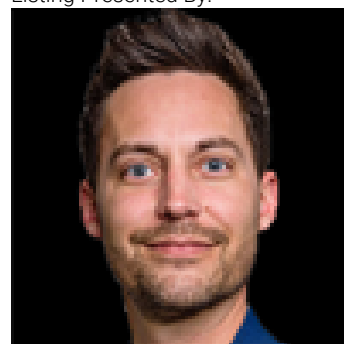
Primary Bedroom 5.76 m X 3.47 m

Bedroom 2 3.31 m X 2.83 m

Bedroom 3 3.32 m X 2.99 m

Breakfast 3.69 m X 3.68 m

Listing Presented By:



Originally Listed by:
RE/MAX Excellence

<http://cathycookson.com/>

RE/MAX ELITE

RE/MAX Elite Sherwood Park

#116, 150 Chippewa Rd ,
Edmonton, Alberta,

Phone: 780-984-9399

Fax:

steveleddy@hotmail.com

The property information on this website is derived from the Canadian Real Estate Association's Data Distribution Facility (DDF®). DDF® references real estate listings held by various brokerage firms and franchisees. The accuracy of information is not guaranteed and should be independently verified. The trademarks REALTOR®, REALTORS® and the REALTOR® logo are controlled by The Canadian Real Estate Association (CREA) and identify real estate professionals who are members of CREA. The trademarks MLS®, Multiple Listing Service® and the associated logos are owned by CREA and identify the quality of services provided by real estate professionals who are members of CREA.