



Edmonton Alberta

\$674,900

Welcome To This Beautiful Walkout Home Backing Onto A Serene Trail System In The Sought-After Community Of Cumberland. This Bright, Open-Concept Layout Showcases Modern Finishes, Ample Cabinetry And Generous Living Space Filled With Natural Light. The Walkout Basement Extends Your Living Area And Provides Direct Access To a Beautifully Manicured Yard and Scenic Surroundings, Perfect For Relaxing Or Entertaining. Spacious Bedrooms Offer Comfort And Function, Including A Well-Appointed Primary Retreat. Located Near Schools, Parks, Shopping And All Amenities, This Home Delivers A Rare Blend Of Privacy, Style And Convenience, PERFECT for Growing Families! (id:6769)

Bedroom 4 Measurements not available

Recreation room Measurements not available

Storage Measurements not available

Living room Measurements not available

Dining room Measurements not available

Kitchen Measurements not available

Family room Measurements not available

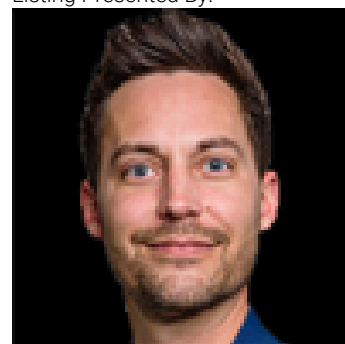
Laundry room Measurements not available

Primary Bedroom Measurements not available

Bedroom 2 Measurements not available

Bedroom 3 Measurements not available

Listing Presented By:



Originally Listed by:
Sarasota Realty



RE/MAX Elite Sherwood Park

#116, 150 Chippewa Rd ,
Edmonton, Alberta,

Phone: 780-984-9399

Fax:

steveleddy@hotmail.com

The property information on this website is derived from the Canadian Real Estate Association's Data Distribution Facility (DDF®). DDF® references real estate listings held by various brokerage firms and franchisees. The accuracy of information is not guaranteed and should be independently verified. The trademarks REALTOR®, REALTORS® and the REALTOR® logo are controlled by The Canadian Real Estate Association (CREA) and identify real estate professionals who are members of CREA. The trademarks MLS®, Multiple Listing Service® and the associated logos are owned by CREA and identify the quality of services provided by real estate professionals who are members of CREA.