



Leduc Alberta

\$559,900

This beautifully designed home in the growing community of Meadowview offers space, style, flexibility, and just under 2,000 sq ft, of living space! The bright open-to-below layout and large windows fill the home with natural light, creating an airy and welcoming feel. The main floor features a bedroom with its own ensuite, perfect for guests or multi-generational living. The kitchen is thoughtfully designed with a walk-through pantry and great flow for everyday living and entertaining. Upstairs, the primary suite is a true retreat with an impressive 5-piece ensuite. A side entrance adds future potential, while the good-sized backyard provides plenty of space to enjoy the outdoors. Located in one of Leduc's fastest-growing communities, close to parks, schools, and amenities, this home offers the perfect balance of comfort and convenience. (id:6769)

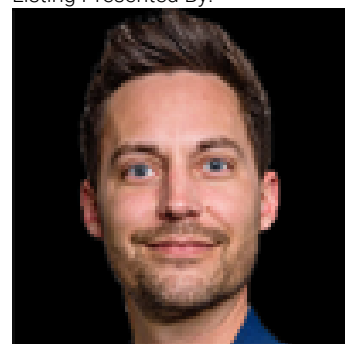
Bedroom 4 Measurements not available

Bedroom 2 Measurements not available

Primary Bedroom Measurements not available

Bedroom 3 Measurements not available

Listing Presented By:



Originally Listed by:
Exp Realty

<https://linktr.ee/arvinguillermo>

RE/MAX ELITE

RE/MAX Elite Sherwood Park

#116, 150 Chippewa Rd ,
Edmonton, Alberta,

Phone: 780-984-9399

Fax:

steveleddy@hotmail.com

The property information on this website is derived from the Canadian Real Estate Association's Data Distribution Facility (DDF®). DDF® references real estate listings held by various brokerage firms and franchisees. The accuracy of information is not guaranteed and should be independently verified. The trademarks REALTOR®, REALTORS® and the REALTOR® logo are controlled by The Canadian Real Estate Association (CREA) and identify real estate professionals who are members of CREA. The trademarks MLS®, Multiple Listing Service® and the associated logos are owned by CREA and identify the quality of services provided by real estate professionals who are members of CREA.