



Sherwood Park Alberta

\$425,000

Welcome to Glen Allen -- where the lots are bigger, the trees are taller, and the neighbours still wave hello. This over 1300 sq ft original-owner bungalow has been lovingly maintained and upgraded over the years, so you can skip the scary "surprise expense" phase of homeownership. Featuring 3 bedrooms, a full bath with convenient access to the 2-piece ensuite, plus a cozy gas fireplace on the main level for peak comfy-season vibes. The partially developed basement offers a bathroom rough-in, chimney for a future fireplace, and loads of potential for extra living space. Outside, enjoy the composite deck and refreshed landscaping perfect for summer evenings and backyard BBQs. Major upgrades over the years include the roof, windows, siding, insulation, fencing, central A/C, hot water tank, copper pigtail, eavestroughs & downspouts -- aka the boring stuff is already done. Located on a quiet mature street close to schools, parks, shopping, and recreation, this is the solid bungalow buyers wait for! (id:6769)

Living room 4.59 m X 5.07 m

Dining room 2.88 m X 3.75 m

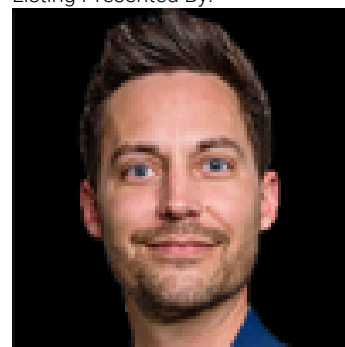
Kitchen 3.75 m X 1.92 m

Primary Bedroom 4.03 m X 4.08 m

Bedroom 2 4.06 m X 3.05 m

Bedroom 3 4.06 m X 2.46 m

Listing Presented By:



Originally Listed by:
Royal LePage Prestige Realty

RE/MAX ELITE

RE/MAX Elite Sherwood Park

#116, 150 Chippewa Rd ,
Edmonton, Alberta,

Phone: 780-984-9399

Fax:

steveleddy@hotmail.com

The property information on this website is derived from the Canadian Real Estate Association's Data Distribution Facility (DDF®). DDF® references real estate listings held by various brokerage firms and franchisees. The accuracy of information is not guaranteed and should be independently verified. The trademarks REALTOR®, REALTORS® and the REALTOR® logo are controlled by The Canadian Real Estate Association (CREA) and identify real estate professionals who are members of CREA. The trademarks MLS®, Multiple Listing Service® and the associated logos are owned by CREA and identify the quality of services provided by real estate professionals who are members of CREA.