



Edmonton Alberta

\$145,900

Fully renovated, 1 bedroom, 1 full bathroom plus den/storage. Corner unit on the 14th floor with panoramic views of the City, Victoria Golf Course and The North Saskatchewan River Valley! Open concept living/dining area perfect for entertaining and working from home. Built-in cabinetry (2), Quartz countertops, fresh paint, new luxury vinyl flooring, new baseboards. Turnkey, low maintenance, perfect to move in. Prime location, steps from transit, restaurants, shopping and downtown business core. Renovated gym with views, free laundry room (P1) w/secure access, outdoor visitor parking. Heated parkade with 1 titled stall #221. All utilities including electricity are included in the condo fees. (id:6769)

Living room Measurements not available

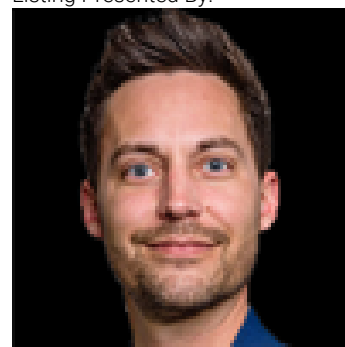
Dining room Measurements not available

Kitchen Measurements not available

Primary Bedroom Measurements not available

Other Measurements not available

Listing Presented By:



Originally Listed by:
RE/MAX Excellence

<https://ushedaakbarshanks.excellenceyeg.com/>

RE/MAX ELITE

RE/MAX Elite Sherwood Park

#116, 150 Chippewa Rd ,
Edmonton, Alberta,

Phone: 780-984-9399

Fax:

steveleddy@hotmail.com

The property information on this website is derived from the Canadian Real Estate Association's Data Distribution Facility (DDF®). DDF® references real estate listings held by various brokerage firms and franchisees. The accuracy of information is not guaranteed and should be independently verified. The trademarks REALTOR®, REALTORS® and the REALTOR® logo are controlled by The Canadian Real Estate Association (CREA) and identify real estate professionals who are members of CREA. The trademarks MLS®, Multiple Listing Service® and the associated logos are owned by CREA and identify the quality of services provided by real estate professionals who are members of CREA.