

## Edmonton Alberta

\$572,999

Welcome to this stunning, move-in ready home located in the highly desirable TAMARACK community! Sitting proudly on a CORNER LOT, this home is flooded with natural light all day thanks to the extra windows throughout. Featuring 3 spacious bedrooms & 2.5 bathrooms, this well-maintained gem includes a kitchen with extended cabinetry, a convenient main floor laundry, & a half bath. Upstairs, enjoy a bright bonus room, full bathroom, & a generous primary suite with ensuite. The unfinished basement offers great potential for your personal touch. Step outside to a large back deck, perfect for relaxing with your evening coffee. Just steps from the MEADOWS REC CENTRE, Public LIBRARY, High School, playgrounds, walking trails, & on-demand public transit. This home blends comfort, location, & lifestyle with all other amenities closed by! (id:6769)

Living room 5.4m x 3.6m

Dining room 2.8m x 4m

Kitchen 2.6m x 4m

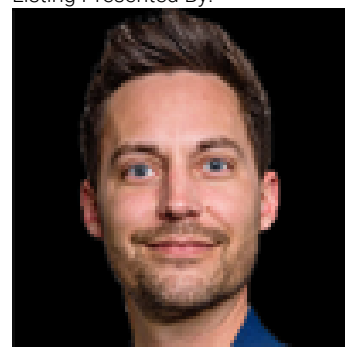
Primary Bedroom 4.5m x 3.7m

Bedroom 2 3.5m x 3.8m

Bedroom 3 2.9m x 3.5m

Bonus Room 4.4m x 5.7m

Listing Presented By:



Originally Listed by:  
Royal LePage Noralta Real Estate

**RE/MAX ELITE**

**RE/MAX Elite Sherwood Park**

#116, 150 Chippewa Rd ,  
Edmonton, Alberta,

Phone: 780-984-9399

Fax:

steveleddy@hotmail.com