



## Edmonton Alberta

\$159,000

Located in the heart of Windermere, this charming one-bedroom, one-bathroom condo offers a prime opportunity to live in one of Edmonton's most desirable communities. Surrounded by a wide range of amenities, you'll find everything from shopping centres and grocery stores to restaurants, cafes, salons, and boutique services just steps from your door. The area also features quick access to the North Saskatchewan River valley and Terwillegar DOG PARK ideal for walking and outdoor activities with amazing biking trails!! Commuters will appreciate the convenience of nearby Anthony Henday Drive, providing efficient travel across the city. Whether you're a first-time buyer, downsizer, or investor, this property offers low-maintenance and LOW CONDO FEE living in a highly sought-after, amenity-rich location. (id:6769)

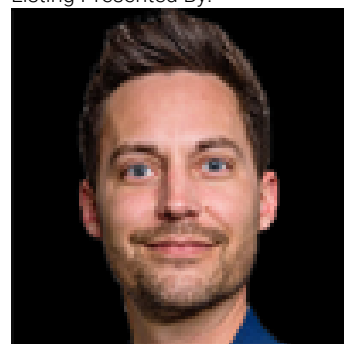
Living room 4.05 m X 3.6 m

Kitchen 4.05 m X 2.72 m

Primary Bedroom 3.27 m X 3.36 m

Laundry room 2.55 m X 1.48 m

Listing Presented By:



Originally Listed by:  
The E Group Real Estate

<https://www.edmontonsbesthomes.com/>

**RE/MAX ELITE**

**RE/MAX Elite Sherwood Park**

#116, 150 Chippewa Rd ,  
Edmonton, Alberta,

Phone: 780-984-9399

Fax:

steveleddy@hotmail.com