



Edmonton Alberta

\$445,000

Beautiful, spacious 2-storey home offering over 1,900 sq. ft. in the mature neighbourhood of Kildare, featuring a single attached garage plus an oversized double detached garage. Step inside to rich newer hardwood flooring throughout. Elegant French doors lead from the front entry into the bright living room. The updated white kitchen features granite countertops, ample cabinetry, and a sunny dining nook. A spacious main floor laundry room with abundant storage and a convenient 2-piece bath complete the main level. Upstairs you'll find 4 generous bedrooms and a 4-piece bath. The finished basement offers a large rec room plus an office/den. Outside, enjoy the huge deck with a hot tub and a full-length front balcony accessible from the primary bedroom. Fantastic family home with exceptional space inside and out! Close to shopping, schools, public transit, parks, and more. (id:6769)

Recreation room 7.38 m X 8.26 m

Utility room 1.75 m X 1.77 m

Storage 1.75 m X 1.77 m

Living room 4.25 m X 6.03 m

Dining room 3.4 m X 2.81 m

Kitchen 3.41 m X 5.68 m

Laundry room 3.18 m X 2.11 m

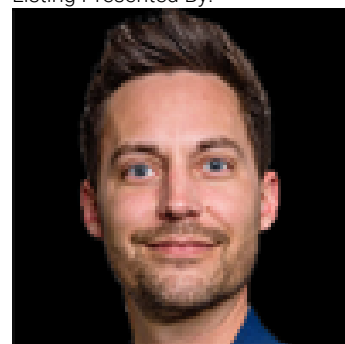
Primary Bedroom 5.53 m X 3.35 m

Bedroom 2 2.73 m X 6.2 m

Bedroom 3 3.87 m X 4.22 m

Bedroom 4 3.9 m X 3.06 m

Listing Presented By:



Originally Listed by:
RE/MAX Elite

RE/MAX ELITE

RE/MAX Elite Sherwood Park

#116, 150 Chippewa Rd ,
Edmonton, Alberta,

Phone: 780-984-9399

Fax:

steveleddy@hotmail.com

The property information on this website is derived from the Canadian Real Estate Association's Data Distribution Facility (DDF®). DDF® references real estate listings held by various brokerage firms and franchisees. The accuracy of information is not guaranteed and should be independently verified. The trademarks REALTOR®, REALTORS® and the REALTOR® logo are controlled by The Canadian Real Estate Association (CREA) and identify real estate professionals who are members of CREA. The trademarks MLS®, Multiple Listing Service® and the associated logos are owned by CREA and identify the quality of services provided by real estate professionals who are members of CREA.