



Edmonton Alberta

\$825,000

Beautiful, private location in Laurier right across from the park. This bungalow is 1,650 sq.ft. Primary bedroom with big walk-in closet and spa inspired ensuite. Entertain in the huge kitchen with a chef's gas stove/oven and pantry. Dining room area with bright windows that look out onto the park. Sunken living room with vaulted ceiling. Basement is fully developed with another bedroom, 4-piece bathroom and large rec room. Great house or great lot! (id:6769)

Bedroom 2 3.74 m X 4.62 m

Recreation room 5 m X 11.52 m

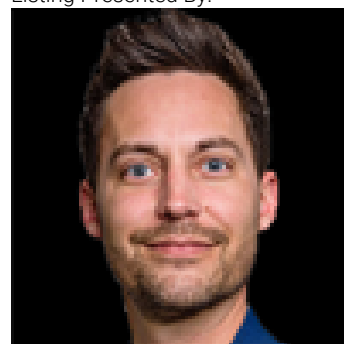
Living room 8.2 m X 4.26 m

Dining room 7.75 m X 4.1 m

Kitchen 6.35 m X 7.38 m

Primary Bedroom 4.71 m X 3.9 m

Listing Presented By:



Originally Listed by:
MaxWell Progressive

<https://gaildocken.maxwellrealty.ca/>

RE/MAX ELITE

RE/MAX Elite Sherwood Park

#116, 150 Chippewa Rd ,
Edmonton, Alberta,

Phone: 780-984-9399

Fax:

steveleddy@hotmail.com

The property information on this website is derived from the Canadian Real Estate Association's Data Distribution Facility (DDF®). DDF® references real estate listings held by various brokerage firms and franchisees. The accuracy of information is not guaranteed and should be independently verified. The trademarks REALTOR®, REALTORS® and the REALTOR® logo are controlled by The Canadian Real Estate Association (CREA) and identify real estate professionals who are members of CREA. The trademarks MLS®, Multiple Listing Service® and the associated logos are owned by CREA and identify the quality of services provided by real estate professionals who are members of CREA.