

NO PHOTO AVAILABLE

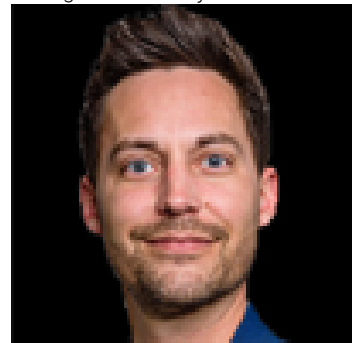
**For more photos &
information, please
contact me.**

Edmonton Alberta

\$7

o 23,286 sq.ft. office/warehouse availableo Additional 2,436 sq. ft. bonus mezzanine area (excluded from GLA)o Dock and grade loadingo Fibre optics availableo Located in Dominion Industrial Parko Excellent access to major transportation routes including 142 Street, 149 Street and Yellowhead Trail (id:6769)

Listing Presented By:



Originally Listed by:
NAI Commercial Real Estate Inc

RE/MAX ELITE

RE/MAX Elite Sherwood Park

#116, 150 Chippewa Rd ,
Edmonton, Alberta,

Phone: 780-984-9399

Fax:

steveleddy@hotmail.com

The property information on this website is derived from the Canadian Real Estate Association's Data Distribution Facility (DDF®). DDF® references real estate listings held by various brokerage firms and franchisees. The accuracy of information is not guaranteed and should be independently verified. The trademarks REALTOR®, REALTORS® and the REALTOR® logo are controlled by The Canadian Real Estate Association (CREA) and identify real estate professionals who are members of CREA. The trademarks MLS®, Multiple Listing Service® and the associated logos are owned by CREA and identify the quality of services provided by real estate professionals who are members of CREA.