



Sherwood Park Alberta

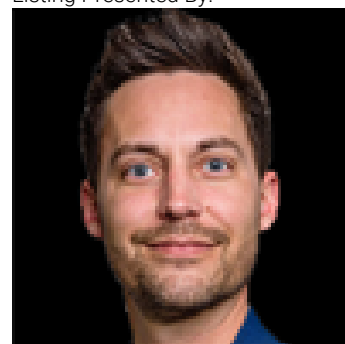
\$289,000

Fall in love with this townhouse style condo located in the HEART OF SHERWOOD PARK! This 3 bd/2 ba unit is over 1300 sf (plus basement workshop) and has recently been updated with fresh paint & stainless steel appliances. The unique 5 level split layout must be seen. You'll find SPACIOUS ROOMS on every level while still providing everyone their own private space. The basement includes a massive industrial workbench, crawlspace, and newer HWT. This unit is one of only a few available with a PRIVATE ATTACHED GARAGE - great for parking or storage! Sip your morning coffee in the peaceful sunshine in your own FENCED PRIVATE COURTYARD! Set on a greenspace with trees & walking trails, you're just steps away from the 10th fairway of Broadmoor Golf Course! Broadmoor Lake Park is just across the street, while amenities like Sherwood Park Mall & Kinsmen Leisure Centre & more are a short walk away. This PET FRIENDLY unit is currently owned by a NON-SMOKER and the LOCATION CANNOT BE BEAT! (id:6769)

Living room 19' x 12;5"
Dining room 9'7" x 12'5"
Kitchen 8'11" x 11'7"
Breakfast 8'11" x 4'6"

Primary Bedroom 16'7" x 9;9"
Bedroom 2 8'11" x 12'
Bedroom 3 9'8" x 8'7"

Listing Presented By:



Originally Listed by:
MaxWell Devonshire Realty

<https://kevinbalicki.maxwelldevonsHIREREALTY.COM/>



RE/MAX Elite Sherwood Park

#116, 150 Chippewa Rd ,
Edmonton, Alberta,

Phone: 780-984-9399

Fax:

steveleddy@hotmail.com

The property information on this website is derived from the Canadian Real Estate Association's Data Distribution Facility (DDF®). DDF® references real estate listings held by various brokerage firms and franchisees. The accuracy of information is not guaranteed and should be independently verified. The trademarks REALTOR®, REALTORS® and the REALTOR® logo are controlled by The Canadian Real Estate Association (CREA) and identify real estate professionals who are members of CREA. The trademarks MLS®, Multiple Listing Service® and the associated logos are owned by CREA and identify the quality of services provided by real estate professionals who are members of CREA.