

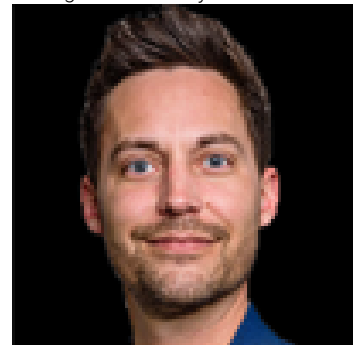


15315 123 Avenue 150 Edmonton AB

\$0

Experience unparalleled sophistication and functionality with this prestigious 10,000-square-foot office space, strategically positioned just off of Yellowhead Trail & 156 Street. Impeccable craftsmanship and refined design elements define this expansive office enclave, fostering an ambiance of prestige and professionalism. Seamlessly integrating modern amenities and technological infrastructure, this space is tailored to meet the discerning needs of high-end corporate clientele. Boasting a prime location within Edmonton's esteemed business district, this address serves as a beacon of prominence and distinction, elevating your company's stature within the corporate landscape. With abundant on-site parking and easy access to major transportation arteries, including highways and public transit, commuting to and from this prestigious address is effortless and efficient.

Listing Presented By:



Originally Listed by:
Exp Realty

kyle@roarkproperties.ca

RE/MAX ELITE

RE/MAX Elite Sherwood Park

#116, 150 Chippewa Rd ,
Edmonton, Alberta,

Phone: 780-984-9399

Fax:

steveleddy@hotmail.com