



Devon Alberta

\$525,000

Welcome to 150 Highwood Crescent. This well-maintained bungalow features a front double attached garage and central air conditioning. Step inside to a spacious living room with vaulted ceilings, creating an open and bright feel. The kitchen and dining area are located at the back of the home with a garden door leading to the deck. The kitchen offers plenty of counter and storage space, and the sink overlooks the beautifully landscaped, fenced backyard. The main floor includes the primary bedroom with walk-in closet and 3-piece ensuite, a second bedroom, laundry and a full bathroom. The fully finished basement adds even more living space with a large family room featuring a cozy corner gas fireplace, a third bedroom, a full bathroom, a large office, and plenty of storage. A great combination of layout, comfort, and outdoor space. Located in a desirable quiet crescent with quick access to the paved trail system and playground. (id:6769)

Family room 7.45 m X 5.6 m

Den 4.37 m X 3.92 m

Bedroom 3 3.74 m X 3.47 m

Living room 4.74 m X 3.83 m

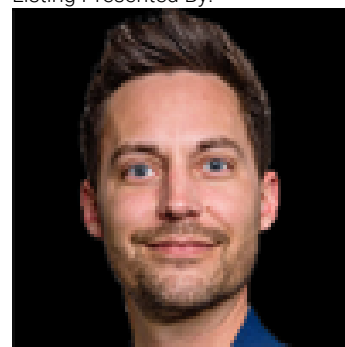
Dining room 3.45 m X 2.26 m

Kitchen 4.79 m X 2.78 m

Primary Bedroom 4.27 m X 4.25 m

Bedroom 2 3.64 m X 2.94 m

Listing Presented By:



Originally Listed by:
The Good Real Estate Company

<http://www.justingriffith.ca/>

RE/MAX ELITE

RE/MAX Elite Sherwood Park

#116, 150 Chippewa Rd ,
Edmonton, Alberta,

Phone: 780-984-9399

Fax:

steveleddy@hotmail.com

The property information on this website is derived from the Canadian Real Estate Association's Data Distribution Facility (DDF®). DDF® references real estate listings held by various brokerage firms and franchisees. The accuracy of information is not guaranteed and should be independently verified. The trademarks REALTOR®, REALTORS® and the REALTOR® logo are controlled by The Canadian Real Estate Association (CREA) and identify real estate professionals who are members of CREA. The trademarks MLS®, Multiple Listing Service® and the associated logos are owned by CREA and identify the quality of services provided by real estate professionals who are members of CREA.