



Edmonton Alberta

\$599,900

Experience contemporary comfort in this 1,995 sq ft home featuring a sleek Modified Prairie elevation and smart design for modern family living. Ideally located mere steps from a park, this 4-bedroom, 3-bath home offers bright, open spaces with stylish touches throughout. The main floor includes a bedroom and full bath, perfect for guests or extended family, along with a great room featuring an electric fireplace for cozy evenings. The chef-inspired kitchen boasts a walk-through pantry, substantial island with an eating bar, and seamless flow to the dining area. Everyday convenience shines with a mudroom with built-in bench and hooks and a separate side entrance. Upstairs, an open-to-below staircase leads to a central bonus room, second-floor laundry, and three spacious bedrooms. The primary bedroom offers a huge walk-in closet and 4-piece ensuite, while a 9' foundation adds room for potential future development. A perfect balance of function, style, and location. Photos are representative. (id:6769)

Bedroom 4 2.74 m X 3.04 m

Great room 3.5 m X 4.47 m

Breakfast 2.89 m X 3.17 m

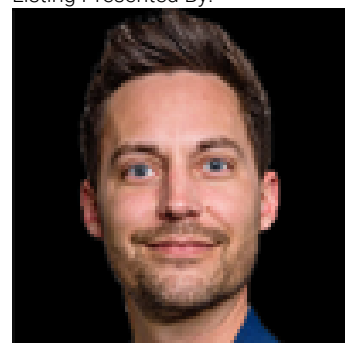
Primary Bedroom 3.35 m X 4.64 m

Bedroom 2 3.09 m X 4.47 m

Bedroom 3 3.2 m X 3.32 m

Bonus Room 3.3 m X 3.55 m

Listing Presented By:



Originally Listed by:
Bode

RE/MAX ELITE

RE/MAX Elite Sherwood Park

#116, 150 Chippewa Rd ,
Edmonton, Alberta,

Phone: 780-984-9399

Fax:

steveleddy@hotmail.com

The property information on this website is derived from the Canadian Real Estate Association's Data Distribution Facility (DDF®). DDF® references real estate listings held by various brokerage firms and franchisees. The accuracy of information is not guaranteed and should be independently verified. The trademarks REALTOR®, REALTORS® and the REALTOR® logo are controlled by The Canadian Real Estate Association (CREA) and identify real estate professionals who are members of CREA. The trademarks MLS®, Multiple Listing Service® and the associated logos are owned by CREA and identify the quality of services provided by real estate professionals who are members of CREA.