



## Rural Lac Ste Anne County Alberta

\$264,900

Welcome to this affordable acreage featuring a 2006 modular home with a spacious walk-out deck, double detached garage, and a fully fenced yard with black chainlink and gate. Perfectly located just minutes from Alberta Beach and Hwy 633, you'll enjoy both convenience and access to endless recreation. Spend your summers fishing, boating, or soaking up the sun, and your winters snowmobiling, cross-country skiing, and more—all right at your doorstep. Inside, this home offers 3 bedrooms, including a primary suite with an ensuite and relaxing soaker tub. The open-concept kitchen and living room provide the ideal space for family and entertaining, with patio doors leading to your large deck. A second bathroom is thoughtfully located near the additional bedrooms. This property is move-in ready and waiting for you to start enjoying the easy acreage lifestyle! (id:6769)

Living room 4.5 m X 4.52 m

Kitchen 4.06 m X 4.52 m

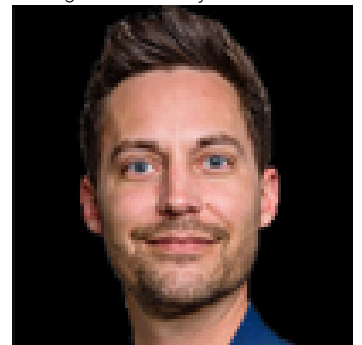
Primary Bedroom 3.39 m X 3.82 m

Bedroom 2 2.65 m X 2.81 m

Bedroom 3 2.78 m X 2.81 m

Laundry room 1.59 m X 2.98 m

Listing Presented By:



Originally Listed by:  
RE/MAX Real Estate

<https://www.edmontonlakeproperty.com/>

**RE/MAX ELITE**

**RE/MAX Elite Sherwood Park**

#116, 150 Chippewa Rd ,  
Edmonton, Alberta,

Phone: 780-984-9399

Fax:

steveleddy@hotmail.com

The property information on this website is derived from the Canadian Real Estate Association's Data Distribution Facility (DDF®). DDF® references real estate listings held by various brokerage firms and franchisees. The accuracy of information is not guaranteed and should be independently verified. The trademarks REALTOR®, REALTORS® and the REALTOR® logo are controlled by The Canadian Real Estate Association (CREA) and identify real estate professionals who are members of CREA. The trademarks MLS®, Multiple Listing Service® and the associated logos are owned by CREA and identify the quality of services provided by real estate professionals who are members of CREA.