



Spruce Grove Alberta

\$429,900

Welcome to this stunning half duplex in the sought-after community of Fenwyck, Spruce Grove - masterfully crafted by Victory Homes. Double attached garage with oversized driveway. Main floor den with full bathroom. The open-concept layout is highlighted by the open-to-above living room, complete with an electric fireplace with feature wall and large windows that flood the space with natural light. Kitchen with central island, ceiling-height cabinets and quartz countertops. Upstairs, enjoy the added comfort of a bonus room, ideal for family lounging or a media area. The spacious primary suite includes a 5-piece ensuite with a double vanity, tiled shower, bathtub, and complete with a walk-in closet. Additional 2 well-sized bedrooms, a 3-piece bathroom, and laundry complete this floor. Separate side entrance to the basement. Backing onto green space. Close to amenities. (id:6769)

Living room 2.76 m X 5.07 m

Dining room 3.08 m X 2.44 m

Kitchen 3.08 m X 4.01 m

Den 2.95 m X 2.59 m

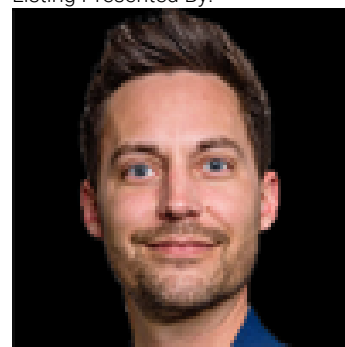
Primary Bedroom 3.66 m X 4.09 m

Bedroom 2 2.4 m X 4.22 m

Bedroom 3 2.42 m X 4.22 m

Bonus Room 4.4 m X 3.85 m

Listing Presented By:



Originally Listed by:
RE/MAX Excellence

<https://mukuloberoi.ca/>

RE/MAX ELITE

RE/MAX Elite Sherwood Park

#116, 150 Chippewa Rd ,
Edmonton, Alberta,

Phone: 780-984-9399

Fax:

steveleddy@hotmail.com

The property information on this website is derived from the Canadian Real Estate Association's Data Distribution Facility (DDF®). DDF® references real estate listings held by various brokerage firms and franchisees. The accuracy of information is not guaranteed and should be independently verified. The trademarks REALTOR®, REALTORS® and the REALTOR® logo are controlled by The Canadian Real Estate Association (CREA) and identify real estate professionals who are members of CREA. The trademarks MLS®, Multiple Listing Service® and the associated logos are owned by CREA and identify the quality of services provided by real estate professionals who are members of CREA.