



Edmonton Alberta

\$549,900

Beautiful 4-level split in the desirable community of Dunluce! This stylish and spacious home features 4 bedrooms, 3 full bathrooms and 1 half bath, offering a functional layout perfect for families. The bright main living areas are welcoming and ideal for both everyday living and entertaining. Recent renovations showcase modern finishes and tasteful design touches throughout, giving the home a fresh and updated feel. The kitchen offers ample cabinetry and workspace, while multiple living areas provide flexibility for a family room, recreation space, or home office. The exterior stands out with elegant stone and granite accents, adding great curb appeal. Enjoy the convenience of an oversized double detached garage with plenty of space for vehicles, storage, or a workshop. Located close to schools, parks, shopping, transit and major roadways, this move-in ready home is a fantastic opportunity in a well-established North Edmonton neighbourhood. (id:6769)

Family room Measurements not available

Bedroom 4 Measurements not available

Living room Measurements not available

Dining room Measurements not available

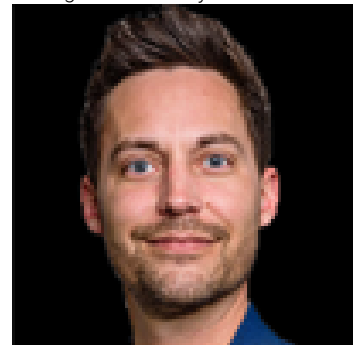
Kitchen Measurements not available

Primary Bedroom Measurements not available

Bedroom 2 Measurements not available

Bedroom 3 Measurements not available

Listing Presented By:



Originally Listed by:
The E Group Real Estate

RE/MAX ELITE

RE/MAX Elite Sherwood Park

#116, 150 Chippewa Rd ,
Edmonton, Alberta,

Phone: 780-984-9399

Fax:

steveleddy@hotmail.com

The property information on this website is derived from the Canadian Real Estate Association's Data Distribution Facility (DDF®). DDF® references real estate listings held by various brokerage firms and franchisees. The accuracy of information is not guaranteed and should be independently verified. The trademarks REALTOR®, REALTORS® and the REALTOR® logo are controlled by The Canadian Real Estate Association (CREA) and identify real estate professionals who are members of CREA. The trademarks MLS®, Multiple Listing Service® and the associated logos are owned by CREA and identify the quality of services provided by real estate professionals who are members of CREA.