



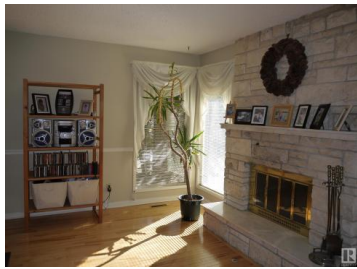
## Edmonton Alberta

Dunluce

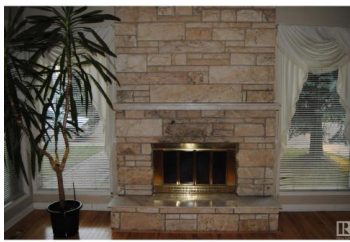
**\$428,000**



Nestled in a quiet but convenient location, adjacent to the huge Castle Downs park, and all amenities such as schools, recreational centres, shopping malls, public transportation, you name it, in a mature neighbourhood. This house has more than 7,000 sq ft lot size and features a very solid brick and stucco exterior structure, three huge bedrooms, 2 full bath, a fully equipped kitchen, a dece...For more information, please visit the website.



- Bedroom 4
- Bedroom 5
- Second Kitchen
- Great room
- Living room
- Dining room
- Kitchen
- Primary Bedroom
- Bedroom 2
- Bedroom 3



### Chi Hung Tam

Century 21 Signature Realty

Phone: (780) 709-7081



RE/MAX Elite Sherwood Park  
 #116, 150 Chippewa Rd  
 Edmonton, Alberta,  
 Canada