



Sherwood Park Alberta

\$144,900

Affordable living in Sherwood Park's best kept land-lease community! This 3 bedroom 2 bathroom home offers upgraded features throughout such as a central AIR-CONDITIONING, a 3 sided gas fireplace, and STAINLESS STEEL APPLIANCES in the kitchen. You'll find not one.. but TWO walk-in closets in the primary suite & one of the additional bedrooms and TWO parking stalls! The open kitchen includes a walk-in pantry, double skylight, and TONS of cupboard space including additional cabinetry in the dining room. The spacious fenced-in yard offers a 12x16 storage shed wired with electricity/lights and plug-ins, ample space to build a potential garage, and a large deck which is perfect for entertaining during the summer months. Whether you're a first-time homeowner, a fur parent, or a family looking for a new space to call your own... this is the home for you! Just minutes away from nature, Anthony Henday, HWY 21, and tons of shopping/transit within walking distance! (id:6769)

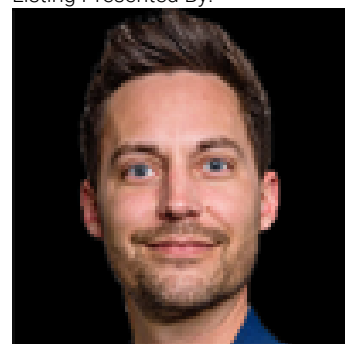
Kitchen 6.56 m X 4.48 m

Primary Bedroom 3.51 m X 4.48 m

Bedroom 2 Measurements not available

Bedroom 3 Measurements not available

Listing Presented By:



Originally Listed by:
Real Broker

<https://www.yegpropertypros.com/agents/caralee-krupa/>

RE/MAX ELITE

RE/MAX Elite Sherwood Park

#116, 150 Chippewa Rd ,
Edmonton, Alberta,

Phone: 780-984-9399

Fax:

steveleddy@hotmail.com

The property information on this website is derived from the Canadian Real Estate Association's Data Distribution Facility (DDF®). DDF® references real estate listings held by various brokerage firms and franchisees. The accuracy of information is not guaranteed and should be independently verified. The trademarks REALTOR®, REALTORS® and the REALTOR® logo are controlled by The Canadian Real Estate Association (CREA) and identify real estate professionals who are members of CREA. The trademarks MLS®, Multiple Listing Service® and the associated logos are owned by CREA and identify the quality of services provided by real estate professionals who are members of CREA.