



Edmonton Alberta

\$699,000

Introducing this meticulously maintained and thoughtfully upgraded 2,067 sq ft residence, offering a perfect blend of comfort, functionality, and modern design. The upper level features 4 generously sized BEDROOMS and 2 FULL BATHROOMS , providing ample space for families. The main floor boasts soaring 9-ft ceilings, a spacious and light-filled living area, a dedicated DEN ideal for a HOME OFFICE or STUDY and a beautifully appointed kitchen with UPGRADED APPLIANCES --perfect for both everyday living and entertaining. The FULLY FINISHED LEGAL BASEMENT, professionally completed by the BUILDER, includes a separate ONE BEDROOM-SUITE with SECOND KITCHEN and an expansive LIVING AREA--ideal for extended family. Additional highlights include: Landscaping, a fully fenced yard, a professionally built deck, and central air conditioning for year-round comfort. This turn-key home combines elegance, practicality, and income potential. (id:6769)

Bedroom 5 Measurements not available

Second Kitchen Measurements not available

Living room 3.66 m X 4.18 m

Dining room 3.64 m X 2.89 m

Kitchen 3.33 m X 3.96 m

Office 2.72 m X 2.55 m

Primary Bedroom 3.63 m X 5 m

Bedroom 2 3.27 m X 3.78 m

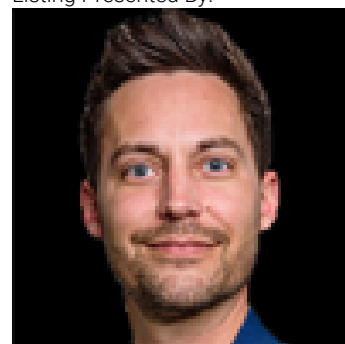
Bedroom 3 2.71 m X 3.14 m

Bedroom 4 3.22 m X 4.19 m

Laundry room 2.24 m X 1.92 m

Loft 5.26 m X 4.14 m

Listing Presented By:



Originally Listed by:
MaxWell Polaris

RE/MAX ELITE

RE/MAX Elite Sherwood Park

#116, 150 Chippewa Rd ,
Edmonton, Alberta,

Phone: 780-984-9399

Fax:

steveleddy@hotmail.com

The property information on this website is derived from the Canadian Real Estate Association's Data Distribution Facility (DDF®). DDF® references real estate listings held by various brokerage firms and franchisees. The accuracy of information is not guaranteed and should be independently verified. The trademarks REALTOR®, REALTORS® and the REALTOR® logo are controlled by The Canadian Real Estate Association (CREA) and identify real estate professionals who are members of CREA. The trademarks MLS®, Multiple Listing Service® and the associated logos are owned by CREA and identify the quality of services provided by real estate professionals who are members of CREA.