



Rural Parkland County Alberta

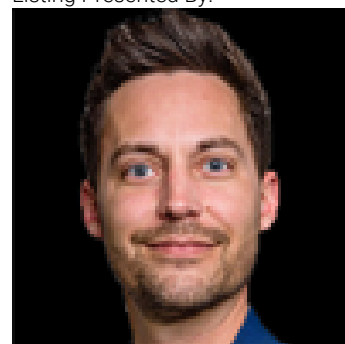
\$789,000

Private forest retreat on 3.3 acres with river access. Step inside to an impressive open concept layout , soaring vaulted ceilings , sturdy custom built concrete construction home. Numerous skylights throughout the home creating a bright and airy atmosphere. HUGE kitchen, stunning primary with spa like ensuite and walk in closet. Two heated attached garages provide year round convenience. Enjoy beautiful country views from every angle! relax on one of the 3 upper decks, work out your own personal studio, ENDLESS POSSIBILITIES! Warmth of passive solar/in floor heating or one of the numerous fireplaces throughout the house will keep you warm on cooler nights. entertain with ease, two patios equipped with firepits at opposite ends of the home, 2 patios in front, surrounded by mature trees to maintain privacy. landscaped with a lazy river running through the property. This is a rare opportunity to own a private retreat of your own ! This property must be seen to be truly appreciated! 20 min to Spruce or Devon (id:6769)

Living room 4.5 m X 5.86 m
Dining room 4.36 m X 4.55 m
Kitchen 4.7 m X 8.81 m
Family room 4.24 m X 8.08 m
Den 4.54 m X 4.31 m
Second Kitchen 3.35 m X 3.41 m

Primary Bedroom 5.97 m X 5.94 m
Bedroom 2 2.92 m X 4.31 m
Bedroom 3 2.54 m X 3.42 m
Bedroom 4 3.07 m X 3.41 m
Bonus Room 4.45 m X 4.31 m
Bedroom 5 2.9 m X 2.47 m

Listing Presented By:



Originally Listed by:
RE/MAX PREFERRED CHOICE



RE/MAX Elite Sherwood Park

#116, 150 Chippewa Rd ,
Edmonton, Alberta,

Phone: 780-984-9399
Fax:
steveleddy@hotmail.com