

Edmonton Alberta

\$359,999

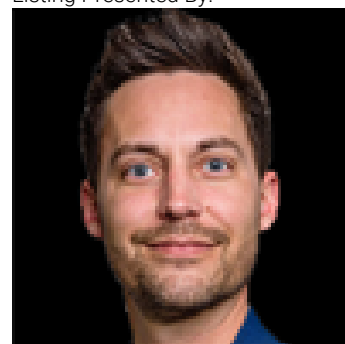
Welcome to this END UNIT TOWNHOUSE located in the most desirable community of LAUREL, with extra windows and lots of natural light! This 3-bedroom, 2.1 bath townhouse comes with a main floor den perfect for an office space-work from home, and a double attached garage for your convenience. The second level features a generous living area, a dining and a modern kitchen which comes with a QUARTZ island. Step out onto your PRIVATE BALCONY and enjoy warm summer evenings with no shared outdoor space. The third level has a primary bedroom with a 4-piece bathroom ensuite, a walk-in closet, along with 2 additional bedrooms and a conveniently located laundry room. Enjoy SUPER LOW CONDO FEES that include snow removal and landscaping services- making life easier year-round! Located with easy access to 17 Street, Ellerslie Road, 34 Street, and Anthony Henday Drive, plus schools, grocery stores, and other amenities just minutes away. This home truly checks all the boxes--a must-see! (id:6769)

Primary Bedroom 3.58 m X 3.7 m

Bedroom 3 2.57 m X 3.74 m

Bedroom 2 2.59 m X 3.48 m

Listing Presented By:



Originally Listed by:
Initia Real Estate

<http://www.liveinitia.ca/>

RE/MAX ELITE

RE/MAX Elite Sherwood Park

#116, 150 Chippewa Rd ,
Edmonton, Alberta,

Phone: 780-984-9399

Fax:

steveleddy@hotmail.com

The property information on this website is derived from the Canadian Real Estate Association's Data Distribution Facility (DDF®). DDF® references real estate listings held by various brokerage firms and franchisees. The accuracy of information is not guaranteed and should be independently verified. The trademarks REALTOR®, REALTORS® and the REALTOR® logo are controlled by The Canadian Real Estate Association (CREA) and identify real estate professionals who are members of CREA. The trademarks MLS®, Multiple Listing Service® and the associated logos are owned by CREA and identify the quality of services provided by real estate professionals who are members of CREA.