



Edmonton Alberta

\$424,900

This 3+1 bedroom renovated bungalow in Lorelei offers a practical layout and a convenient location close to schools, parks, and neighborhood amenities. Commuters will appreciate the easy access to downtown, major roadways, and public transit. The main level includes a bright living area, an eat-in kitchen, three bedrooms, and a 4-piece bathroom. The basement is partially developed with a fourth bedroom, a 2-piece bathroom, and open space ready for future finishing or potential suite development (subject to municipal requirements). The large east-facing yard provides room for outdoor activities, gardening, or the possibility of adding a new garage (even with a suite!). This property is ready for immediate occupancy and also offers flexibility for updates or customization. A solid option for buyers seeking value in an established community. This home needs to be seen in person to be fully appreciated! (id:6769)

Bedroom 4 Measurements not available

Living room Measurements not available

Dining room Measurements not available

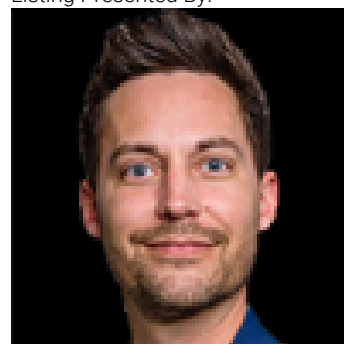
Kitchen Measurements not available

Primary Bedroom Measurements not available

Bedroom 2 Measurements not available

Bedroom 3 Measurements not available

Listing Presented By:



Originally Listed by:
The E Group Real Estate



RE/MAX Elite Sherwood Park

#116, 150 Chippewa Rd ,
Edmonton, Alberta,

Phone: 780-984-9399

Fax:

steveleddy@hotmail.com

The property information on this website is derived from the Canadian Real Estate Association's Data Distribution Facility (DDF®). DDF® references real estate listings held by various brokerage firms and franchisees. The accuracy of information is not guaranteed and should be independently verified. The trademarks REALTOR®, REALTORS® and the REALTOR® logo are controlled by The Canadian Real Estate Association (CREA) and identify real estate professionals who are members of CREA. The trademarks MLS®, Multiple Listing Service® and the associated logos are owned by CREA and identify the quality of services provided by real estate professionals who are members of CREA.