



Edmonton Alberta

\$545,000

FORMER SHOWHOME! Pride of ownership shines throughout this immaculate, upgraded, & well maintained bi-level, ideally located on a quiet street in the highly sought-after Alpine Estates community--close to all amenities. Major recent renovations include fresh wall & ceiling paint, new flooring & baseboards on all levels, new light fixtures, a new roof, new furnace, newer air conditioning, newer deck & insulated garage - offering true move-in-ready confidence. The open floor plan features vaulted ceilings, spacious eat-in kitchen with nook, walk-in pantry, a bright main-floor living room. The thoughtfully designed layout offers 3+1 bedrooms, including private upper-level primary retreat above the garage complete with walk-in closet & ensuite plus two 4-piece bathrooms serve the home with style and function. The fully finished basement impresses with a huge family room and cozy gas fireplace, perfect for entertaining or relaxing. Homes of this quality, condition, and location are rare. (id:6769)

Family room Measurements not available

Living room Measurements not available

Dining room Measurements not available

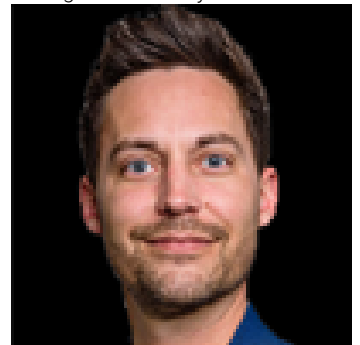
Kitchen Measurements not available

Bedroom 2 Measurements not available

Bedroom 3 Measurements not available

Primary Bedroom Measurements not available

Listing Presented By:



Originally Listed by:
Exp Realty



RE/MAX Elite Sherwood Park

#116, 150 Chippewa Rd ,
Edmonton, Alberta,

Phone: 780-984-9399

Fax:

steveleddy@hotmail.com

The property information on this website is derived from the Canadian Real Estate Association's Data Distribution Facility (DDF®). DDF® references real estate listings held by various brokerage firms and franchisees. The accuracy of information is not guaranteed and should be independently verified. The trademarks REALTOR®, REALTORS® and the REALTOR® logo are controlled by The Canadian Real Estate Association (CREA) and identify real estate professionals who are members of CREA. The trademarks MLS®, Multiple Listing Service® and the associated logos are owned by CREA and identify the quality of services provided by real estate professionals who are members of CREA.