



## Sherwood Park Alberta

\$459,900

THE NO FLOORING HOUSE IN FOXBORO! Yes, all the old flooring has been pulled out and is ready for the new flooring of your choice. PRICED RIGHT so it gives you the dollars for a purchase plus improvement mortgage, or room to spend the cash on the things that matter to you. 5 Bedrooms (3 up + 2 down), 3 Full Bathrooms, this will be a great family home. Large Primary with 3 pce ensuite & walk in closet, Vaulted ceiling through the living room/kitchen area. Basement with 2 Huge Bedrooms & Family Room with Gas Fireplace. Attached Double Garage you'll enjoy in the winter. Crescent location also around schools, parks, trails, shopping, you name it. Roof & Hot Water Tank 2016, original furnace & windows (1998). Backyard with working fountain, nicely landscaped, also apple tree & raspberry bushes. (id:6769)

Family room 5.07 m X 6.34 m

Bedroom 4 4.63 m X 3.72 m

Bedroom 5 4.32 m X 4.88 m

Living room 4.02 m X 4.41 m

Dining room 3.84 m X 2.79 m

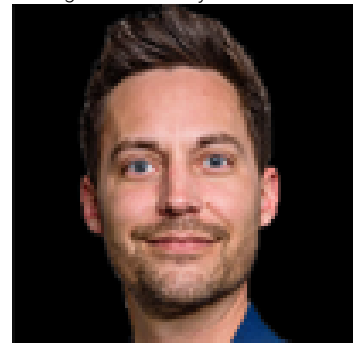
Kitchen 3.84 m X 3.14 m

Primary Bedroom 3.82 m X 4.36 m

Bedroom 2 2.72 m X 3.1 m

Bedroom 3 3.21 m X 3.35 m

Listing Presented By:



Originally Listed by:  
MaxWell Devonshire Realty

<http://www.coreymcewen.com/>

**RE/MAX ELITE**

**RE/MAX Elite Sherwood Park**

#116, 150 Chippewa Rd ,  
Edmonton, Alberta,

Phone: 780-984-9399

Fax:

steveleddy@hotmail.com

The property information on this website is derived from the Canadian Real Estate Association's Data Distribution Facility (DDF®). DDF® references real estate listings held by various brokerage firms and franchisees. The accuracy of information is not guaranteed and should be independently verified. The trademarks REALTOR®, REALTORS® and the REALTOR® logo are controlled by The Canadian Real Estate Association (CREA) and identify real estate professionals who are members of CREA. The trademarks MLS®, Multiple Listing Service® and the associated logos are owned by CREA and identify the quality of services provided by real estate professionals who are members of CREA.