



Spruce Grove Alberta

\$489,000

Stunning kitchen featuring a spacious island, walk in pantry and sleek stainless steel appliances. The open concept layout seamlessly connects the kitchen, livingroom and dinette area, flooded with natural light from the large windows, offering a lovely view of the back yard. This home offeres three generously sized bedrooms and three bathrooms, with a large bonus room upstairs. Perfect for a playroom, home office or cozy nook. All bedrooms are located on the upper level, including the primary suite, which boasts a 4 pc ensuite and walk in closet. Enjoy outdoor living in the beautifully landscaped yard with 2 apple trees. The large deck works well for barbeques or just relaxing in the sunshine. The unspoiled basement has endless possibilities like adding a fourth bedroom, bathroom and large family room. The double front drive garage is convenient for access and has a panel that can be converted for plugging in an electrical vehicle. (id:6769)

Living room 4.29 m X 3.89 m

Dining room 2.74 m X 3.68 m

Kitchen 3.51 m X 2.93 m

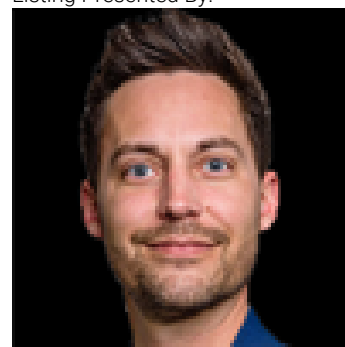
Primary Bedroom 4.22 m X 3.13 m

Bedroom 2 3.09 m X 2.8 m

Bedroom 3 2.78 m X 3.14 m

Bonus Room 4.8 m X 3.7 m

Listing Presented By:



Originally Listed by:
Century 21 Leading

<http://www.lorrainenorthcott.com/>

RE/MAX ELITE

RE/MAX Elite Sherwood Park

#116, 150 Chippewa Rd ,
Edmonton, Alberta,

Phone: 780-984-9399

Fax:

steveleddy@hotmail.com