



Edmonton Alberta

\$1,798,000

A rare opportunity to own one of Edmonton's most coveted properties! Backing directly onto the North Saskatchewan River. Close to Windermere Golf & Country Club, this 0.95-acre treed estate offers unparalleled privacy and natural beauty. The property features a walk-out 5-bedroom bungalow with a fully finished basement, equipped with both attached and detached double garages. Surrounded by mature trees and expansive outdoor space, this estate provides the ideal setting to renovate, re-develop, or build your dream home. All of this is just minutes from scenic walking/biking trails, premier golf, upscale shopping, dining, and the Currents of Windermere. (id:6769)

Bedroom 4 Measurements not available

Bedroom 5 Measurements not available

Recreation room Measurements not available

Living room Measurements not available

Dining room Measurements not available

Kitchen Measurements not available

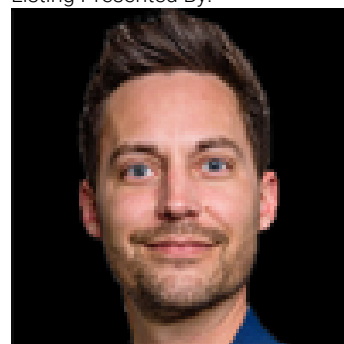
Family room Measurements not available

Primary Bedroom Measurements not available

Bedroom 2 Measurements not available

Bedroom 3 Measurements not available

Listing Presented By:



Originally Listed by:
Mozaic Realty Group

<http://www.fanyangteam.com/>



RE/MAX Elite Sherwood Park

#116, 150 Chippewa Rd ,
Edmonton, Alberta,

Phone: 780-984-9399

Fax:

steveleddy@hotmail.com

The property information on this website is derived from the Canadian Real Estate Association's Data Distribution Facility (DDF®). DDF® references real estate listings held by various brokerage firms and franchisees. The accuracy of information is not guaranteed and should be independently verified. The trademarks REALTOR®, REALTORS® and the REALTOR® logo are controlled by The Canadian Real Estate Association (CREA) and identify real estate professionals who are members of CREA. The trademarks MLS®, Multiple Listing Service® and the associated logos are owned by CREA and identify the quality of services provided by real estate professionals who are members of CREA.