



Edmonton Alberta

\$684,900

Need space? This beautifully maintained 2,250 SQ FT two-storey home in sought-after McConachie offers a fully finished basement with separate entrance and room for the whole family. The main floor features an open-concept layout with hardwood flooring, a cozy fireplace, and a spacious kitchen with granite countertops, a large island, pantry, and breakfast nook overlooking the backyard. You'll also find a main floor den, full bathroom, and laundry. Upstairs offers vinyl plank flooring throughout, a bright bonus room, four spacious bedrooms, including a primary suite with a walk-in closet and luxurious 5-piece ensuite with jacuzzi tub. The fully finished basement includes two finished rooms, a kitchen area, dining area, full bathroom, and storage. Carpet-free and ideally located close to schools, parks, shopping, transit, and major commuter routes. Quick possession available! (id:6769)

Family room 12'11 x 12'

Bedroom 5 12'5 x 10'5

Bedroom 6 12'3 x 12'11

Utility room 11'8 x 10'11

Second Kitchen 14'1 x 2'8

Living room 12'6 x 15'6

Dining room 11'1 x 9'5

Kitchen 13'10 x 15'4

Den 10'10 x 9'2

Primary Bedroom 21'6 x 12'8

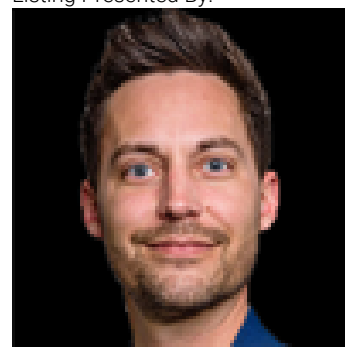
Bedroom 2 12'10 x 9'5

Bedroom 3 10'7 x 11'5

Bedroom 4 11'5 x 9'10

Bonus Room 13'3 x 13'1

Listing Presented By:



Originally Listed by:
MaxWell Polaris

RE/MAX ELITE

RE/MAX Elite Sherwood Park

#116, 150 Chippewa Rd ,
Edmonton, Alberta,

Phone: 780-984-9399

Fax:

steveleddy@hotmail.com

The property information on this website is derived from the Canadian Real Estate Association's Data Distribution Facility (DDF®). DDF® references real estate listings held by various brokerage firms and franchisees. The accuracy of information is not guaranteed and should be independently verified. The trademarks REALTOR®, REALTORS® and the REALTOR® logo are controlled by The Canadian Real Estate Association (CREA) and identify real estate professionals who are members of CREA. The trademarks MLS®, Multiple Listing Service® and the associated logos are owned by CREA and identify the quality of services provided by real estate professionals who are members of CREA.