



Spruce Grove Alberta

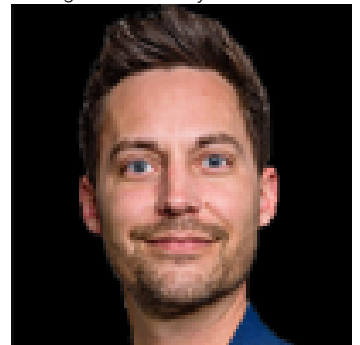
\$679,000

WALKOUT BASEMENT BACKING ONTO POND | PIE-SHAPED | CUL-DE SAC | 5 BEDS | 3 FULL BATHS | MAIN FLOOR BED & FULL BATH | SPICE KITCHEN | OPEN TO ABOVE | TRIPLE PANE WINDOWS Welcome to this beautifully designed home in the desirable community of Tonewood offers 5 BEDROOMS AND 3 FULL BATHROOMS, including a MAIN FLOOR BEDROOM AND FULL BATH, perfect for guests or extended family. The open-concept main floor features a bright living area with large windows and a stunning OPEN TO ABOVE CEILING, creating a grand and airy feel. The modern kitchen is complemented by a SEPARATE SPICE KITCHEN, ideal for everyday cooking and entertaining. Upstairs, you'll find 4 BEDROOMS, A SPACIOUS BONUS ROOM, AND A UPPER FLOOR LAUNDRY ROOM, WALKOUT BASEMENT BACKS ONTO A POND WITH NO REAR NEIGHBOURS, offering peaceful views and excellent future development potential. Additional highlights include TRIPLE PANE WINDOWS, REAR DECK WITH BBQ GAS HOOKUP & BUILT-IN SPEAKERS. Close to parks, schools & golf. SOME PHOTOS ARE VIRTUALLY STAGED. (id:6769)

Living room 13*14.4
Dining room 13.9*8.11
Kitchen 13.9*12.10
Bedroom 5 13.5*10.8
Primary Bedroom 14.5*18.6

Bedroom 2 10.3*12
Bedroom 3 10.3*15.4
Bedroom 4 11.11*9.11
Bonus Room 14.6*12.11
Laundry room 4.9*8.10

Listing Presented By:



Originally Listed by:
RE/MAX Excellence

<https://homesbygurjitsandhu.c21.ca/>

RE/MAX ELITE

RE/MAX Elite Sherwood Park

#116, 150 Chippewa Rd ,
Edmonton, Alberta,

Phone: 780-984-9399

Fax:

steveleddy@hotmail.com

The property information on this website is derived from the Canadian Real Estate Association's Data Distribution Facility (DDF®). DDF® references real estate listings held by various brokerage firms and franchisees. The accuracy of information is not guaranteed and should be independently verified. The trademarks REALTOR®, REALTORS® and the REALTOR® logo are controlled by The Canadian Real Estate Association (CREA) and identify real estate professionals who are members of CREA. The trademarks MLS®, Multiple Listing Service® and the associated logos are owned by CREA and identify the quality of services provided by real estate professionals who are members of CREA.