



Edmonton Alberta

\$379,900

WELCOME to this CHARMING bungalow nestled in the sought-after community of Satou. This home presents an excellent opportunity for FIRST TIME home buyers, INVESTORS, or those looking to DOWNSIZE. Step inside to the BRIGHT living and dining area, highlighted by a cozy wood-burning FIREPLACE. The UPDATED kitchen overlooks a large, PRIVATE BACKYARD - ideal for entertaining, gardening, or simply enjoying quiet evenings outdoors. Down the hall, you will find the PRIMARY bedroom with a convenient two-piece ENSUITE, along with two additional generously sized bedrooms and a fully UPDATED main bathroom. The FINISHED BASEMENT expands your living space with 2 ADDITIONAL bedrooms, a full bathroom and a versatile recreation area, all while preserving its original charm. Schools are within walking distance, EASY ACCESS to major roadways, shopping, and public transit. MAJOR UPDATES INCLUDE the roof, windows, furnace and hot water tank - leaving your personal touch and vision to make this SWEET HOME YOUR OWN! (id:6769)

Family room Measurements not available

Bedroom 4 Measurements not available

Bedroom 5 Measurements not available

Cold room Measurements not available

Laundry room Measurements not available

Living room 4.2 m X 5 m

Dining room 2.8 m X 2.8 m

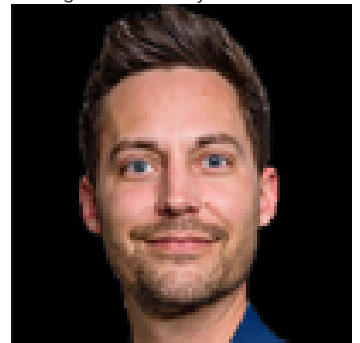
Kitchen 3 m X 3.8 m

Primary Bedroom 3.3 m X 3.8 m

Bedroom 2 2.8 m X 3 m

Bedroom 3 2.7 m X 3.3 m

Listing Presented By:



Originally Listed by:
Century 21 Masters



RE/MAX Elite Sherwood Park

#116, 150 Chippewa Rd ,
Edmonton, Alberta,

Phone: 780-984-9399

Fax:

steveleddy@hotmail.com

The property information on this website is derived from the Canadian Real Estate Association's Data Distribution Facility (DDF®). DDF® references real estate listings held by various brokerage firms and franchisees. The accuracy of information is not guaranteed and should be independently verified. The trademarks REALTOR®, REALTORS® and the REALTOR® logo are controlled by The Canadian Real Estate Association (CREA) and identify real estate professionals who are members of CREA. The trademarks MLS®, Multiple Listing Service® and the associated logos are owned by CREA and identify the quality of services provided by real estate professionals who are members of CREA.